

# Washington State Fellows' Network

Engaging Teacher Leaders in English Language Arts, Mathematics, Science, and Early Learning

## Mission

*The Fellows are a growing network of Washington State educational leaders who expand their capacity to improve student learning through ongoing professional learning and leadership development within their local context and in partnership with school districts, educational service districts, community agencies, and state organizations.*

## Vision

*The impact of the Fellows will result in measurable growth for every student, in every learning environment, in Washington.*

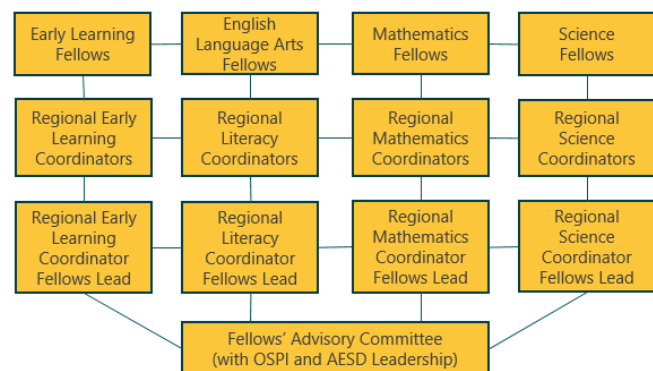
## What is the Washington State Fellows' Network?

The Fellows' Network is a group of over 500 instructional leaders convened by the Office of Superintendent of Public Instruction (OSPI) and the Association of Educational Service Districts (AESD) to support district and community implementation of state learning standards in mathematics, English Language Arts (ELA), and science; and of the Early Learning Guidelines.

Regional ESD coordinators, in collaboration with OSPI content-area leadership, convene the Fellows four times per year to engage in shared learning. New Fellows participate in an orientation meeting prior to the four convenings. Common to all four areas is a commitment to build content learning and instructional leadership, with a focus on equity.

While Fellows do not need to commit to every year of this three-year program, those who do will experience deeper and expanded learning in the topics of leadership, adult learning, change management, content area knowledge, equity, use of data and analytics, and student growth.

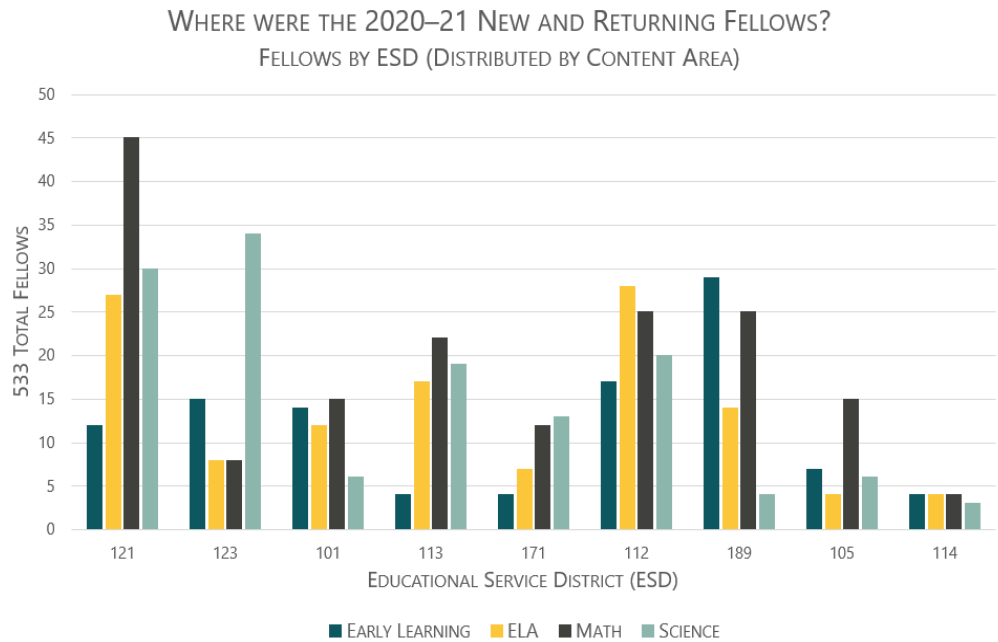
## HOW IS THE FELLOWS' NETWORK STRUCTURED?



## How are the Fellows distributed regionally across the state?

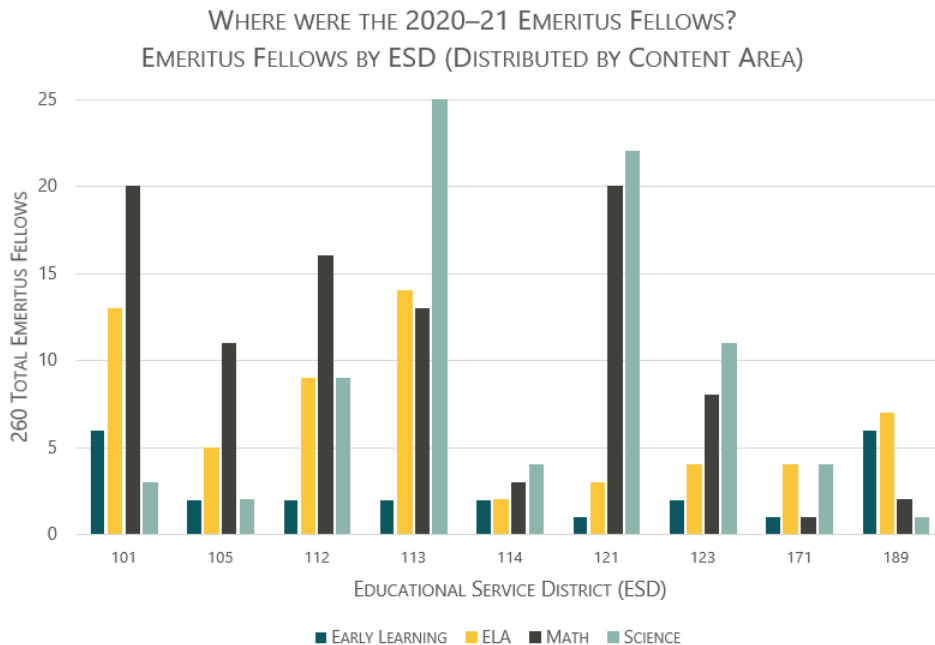
### New and Returning Fellows

- The Fellows' Network is distributed across four content areas in all nine ESD regions of the state.
- 533 Fellows in the four content areas participated in 2020–21.
- Participation numbers declined from the year prior. This can be attributed to lack of resources and time in response to the global pandemic.



### Emeritus Fellows

- Fellows who wish to remain connected to the Network beyond three years may become Emeritus Fellows.
- Emeriti complete an annual interest survey to let regional coordinators know that they are available.
- Emeritus Fellows will continue their leadership with local, regional, and/or state initiatives.
- 260 Emeritus Fellows in the four content areas participated in 2020–21.



## Becoming a Fellow

### How does someone become a Fellow?

Fellows complete an application (including assurances). ESD regional coordinators lead the selection process. Application cycles open annually in April. ESDs will notify applicants in late summer. See the [OSPI website](#) for more information.

### What are the commitments of a Fellow?

- Fulfill the obligations outlined in the Fellows' Assurances.
- Collaborate throughout the year with district, building, program, or agency administrators to discuss, create and document the ongoing Fellow's Action Plan and Reflection Tool. The plan outlines how the Fellow's leadership will support the school and/or community's learning standards (math, ELA, science) or early learning implementation.
- Implement learning from the Fellows' meetings within your own instructional practice and support other teachers' initiative/outcome goals in Washington State Learning Standards in math, ELA, science; or Early Learning Guidelines.
- Submit completed Fellow's Plan to the ESD Regional Coordinator/Advisor at the end of the school year.
- **English Language Arts, Mathematics, and Early Learning:** Attend and participate in a minimum of four one-day regional Fellows' convenings. New Fellows attend an additional orientation meeting. Convenings may take place in-person, remote, or hybrid.
- **Science:** Attend and participate in a minimum of four convenings (One two-day statewide convening and three one-day regional convenings). New Fellows attend an additional orientation meeting. Convenings may take place in-person, remote or hybrid.

### What are the administrative commitments of the school, district, and/or community organization?

- With the Fellow, collaboratively review, agree to, and sign the Assurances.
- In the fall, collaborate with the Fellow to complete the Fellow's Action Plan and Reflection Tool.
- Meet with the Fellow after each Fellows' convening to revisit and update the Fellow's action plan.
- Support travel and substitute costs associated with all Fellows' professional learning convenings.

### How do districts/organizations benefit from supporting a Fellow?

- Gain in-house expertise.
- Expand opportunities to build teacher leaders.
- Access current approaches and strategies to content learning.

For Statewide Fellows' questions related to each content area, please contact:

#### ELA

Effie Triol  
K-4 Literacy Coordinator,  
ESD 112  
[effie.triol@esd112.org](mailto:effie.triol@esd112.org)  
360952-3413

#### Math

Debra Kowalkowski  
Regional Math Coordinator,  
NEWESD 101  
[dkowalkowski@esd101.net](mailto:dkowalkowski@esd101.net)  
509-323-2739

#### Science

Lorianne Donovan-Herman  
Regional Science Coordinator,  
ESD 123  
[ldonovan@esd123.org](mailto:ldonovan@esd123.org)  
509-544-5738

#### Early Learning

Samantha Stevens  
Relationship-Based PD Manager,  
ESD 112  
[samantha.stevens@esd112.org](mailto:samantha.stevens@esd112.org)  
360-952-3361