

# ENABLING CONTEXT FOR IMPLEMENTING INTEGRATED STUDENT SUPPORTS

## LEADERSHIP

A culture of distributive and collaborative leadership engages all students, staff, families, and community leaders

START HERE



**VISION**  
Clear vision for, and commitment to, supporting the learning and development of the whole child



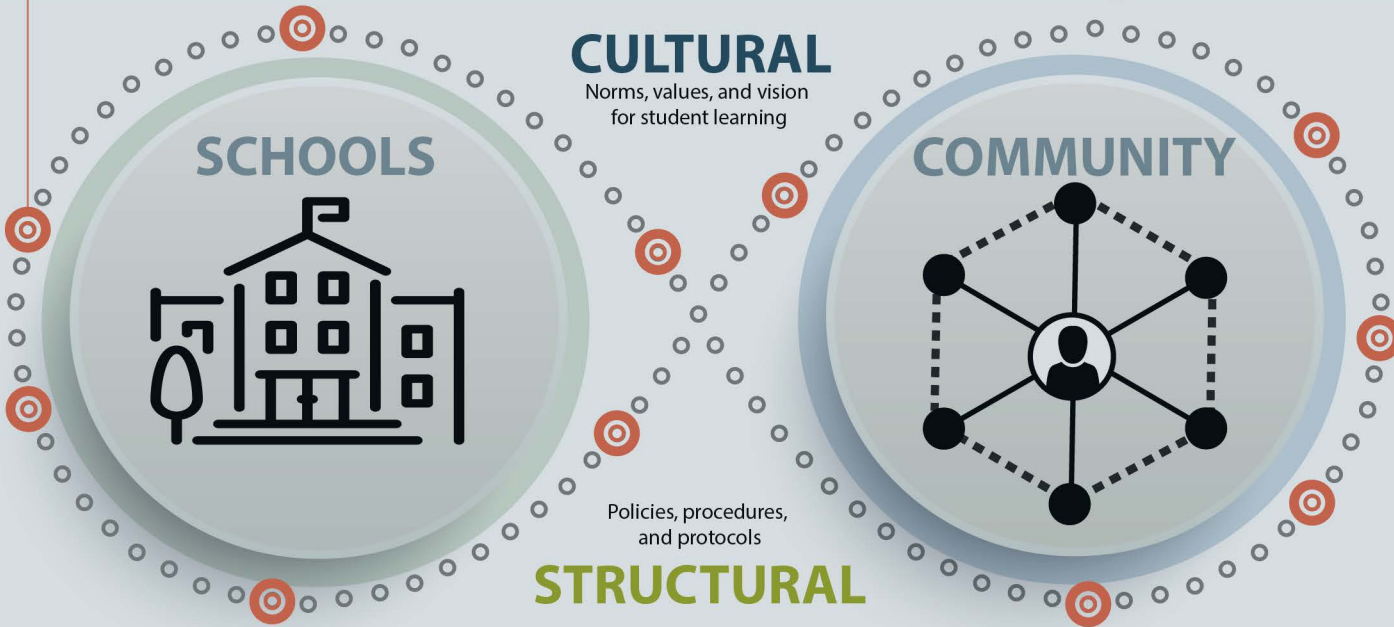
**POSITIVE SCHOOL CLIMATE & CULTURE**  
Leadership teams take deliberate steps to create a positive school climate and to foster the development of a school culture that is safe, inclusive, and supportive



**BUY-IN & SUPPORT**  
Broad support among staff and the larger school community



**HIGH EXPECTATIONS**  
Families, school, district, and community leaders set high expectations for all students



**FUNDING**  
Dedicated funding for implementation and ongoing supports



**COLLABORATION SUPPORTS**  
Organizational structures enable meaningful, two-way collaboration between families, schools, and community partners



**PROFESSIONAL LEARNING**  
Training, coaching, and other structured supports build the capacity of all staff, families, and community members



**LEARNING IN MULTIPLE CONTEXTS**  
Opportunities to learn in multiple contexts (school, home, and community) are connected and complementary



**TEAM STRUCTURES**  
Teams use results-oriented cycle of inquiry to drive continuous improvement



**UNIVERSAL SUPPORTS**  
Solid foundation of tier 1 (or universal) instruction and supports is available for all students



**OSPI** | Center for the Improvement of Student Learning

[www.k12.wa.us/cisl/iss](http://www.k12.wa.us/cisl/iss)

