

What is an Academic Peer

Division of Assessment and Student Information

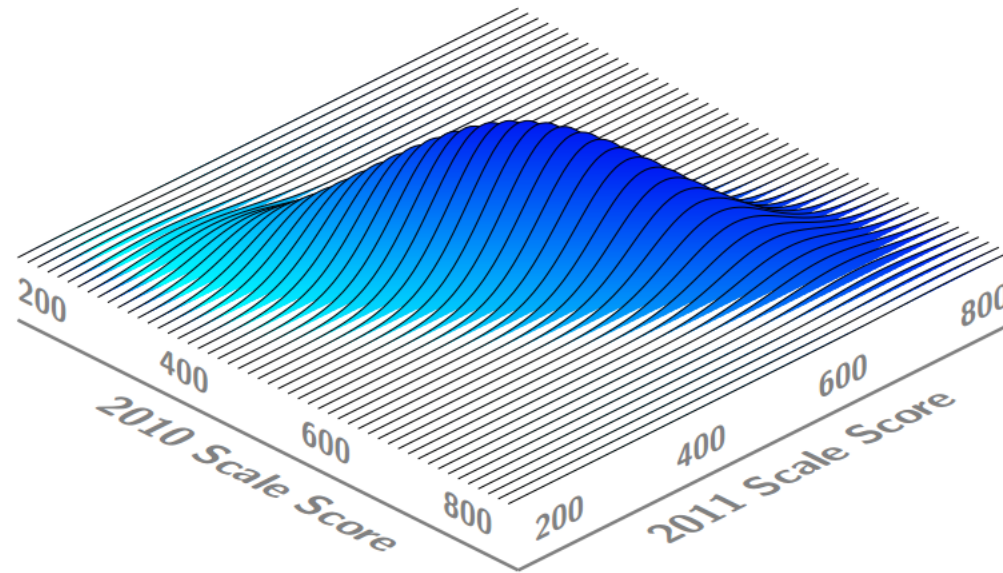
The following slides indicate what an academic peer group is and how student assessment data is used to create a Student Growth Percentile.



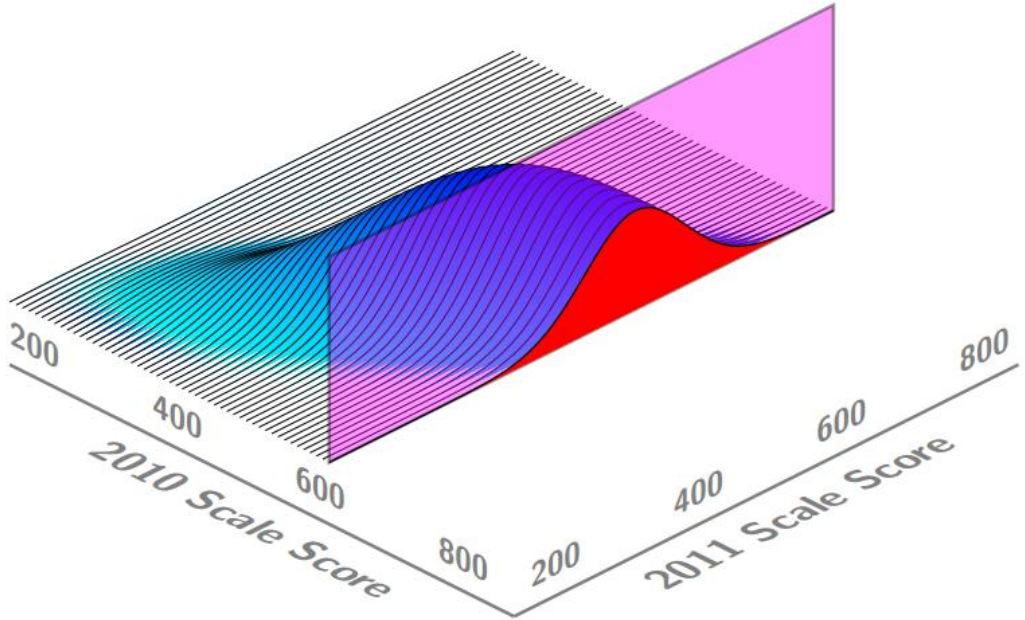
What is an academic peer?

- Student growth percentiles (SGPs) consider where a student starts and use assessment results for all Washington students in a given content area and grade to quantify each student's annual progress.
- Similar to height and weight percentiles, an SGP describes a student's relative academic growth compared to other students with the same achievement history—their academic peers.
- Academic peers are not a set of students but are constructed using all the state's data.

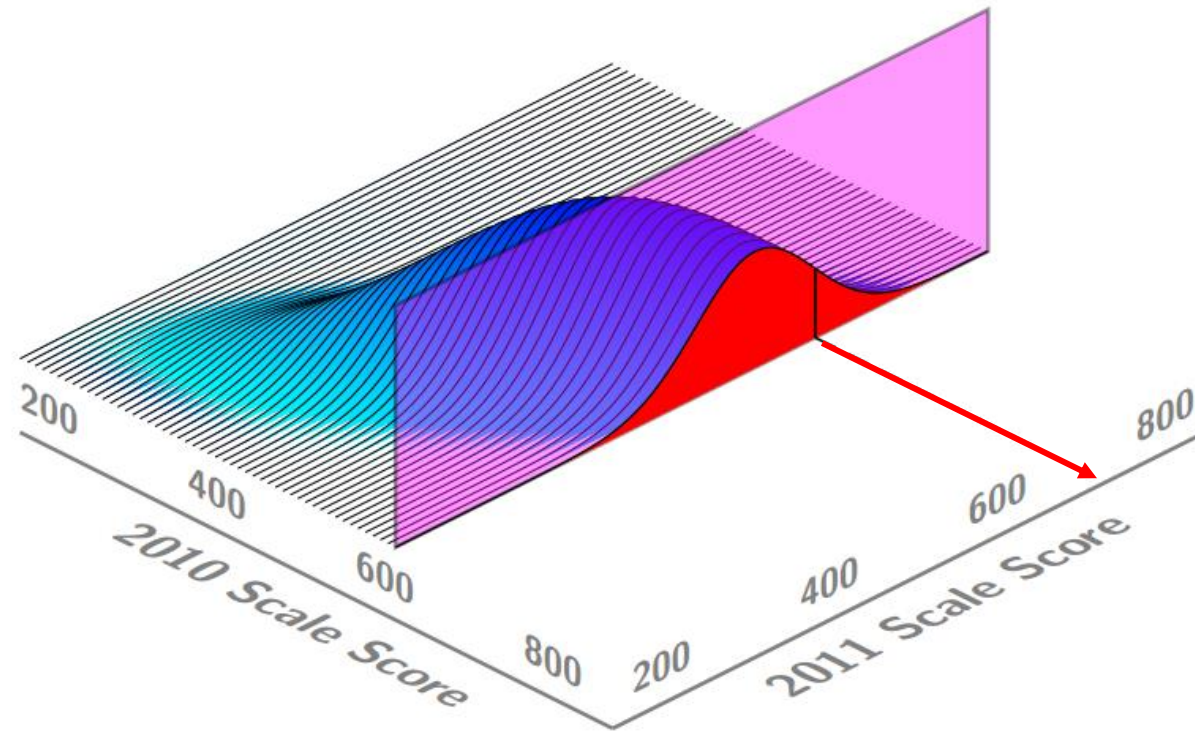
Two Years of Test Scores: The Simplest Case



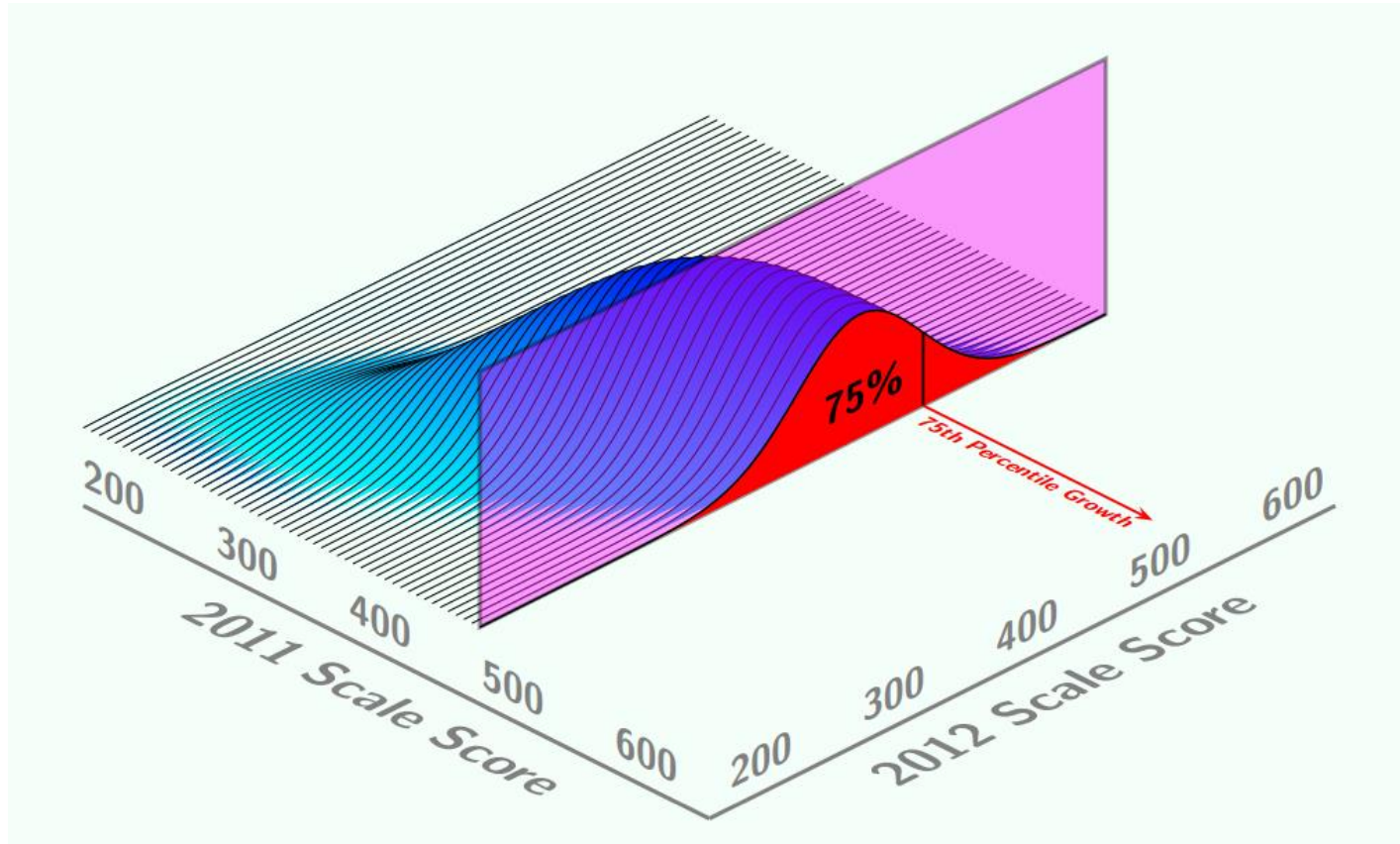
Accounting for Where a Student Starts



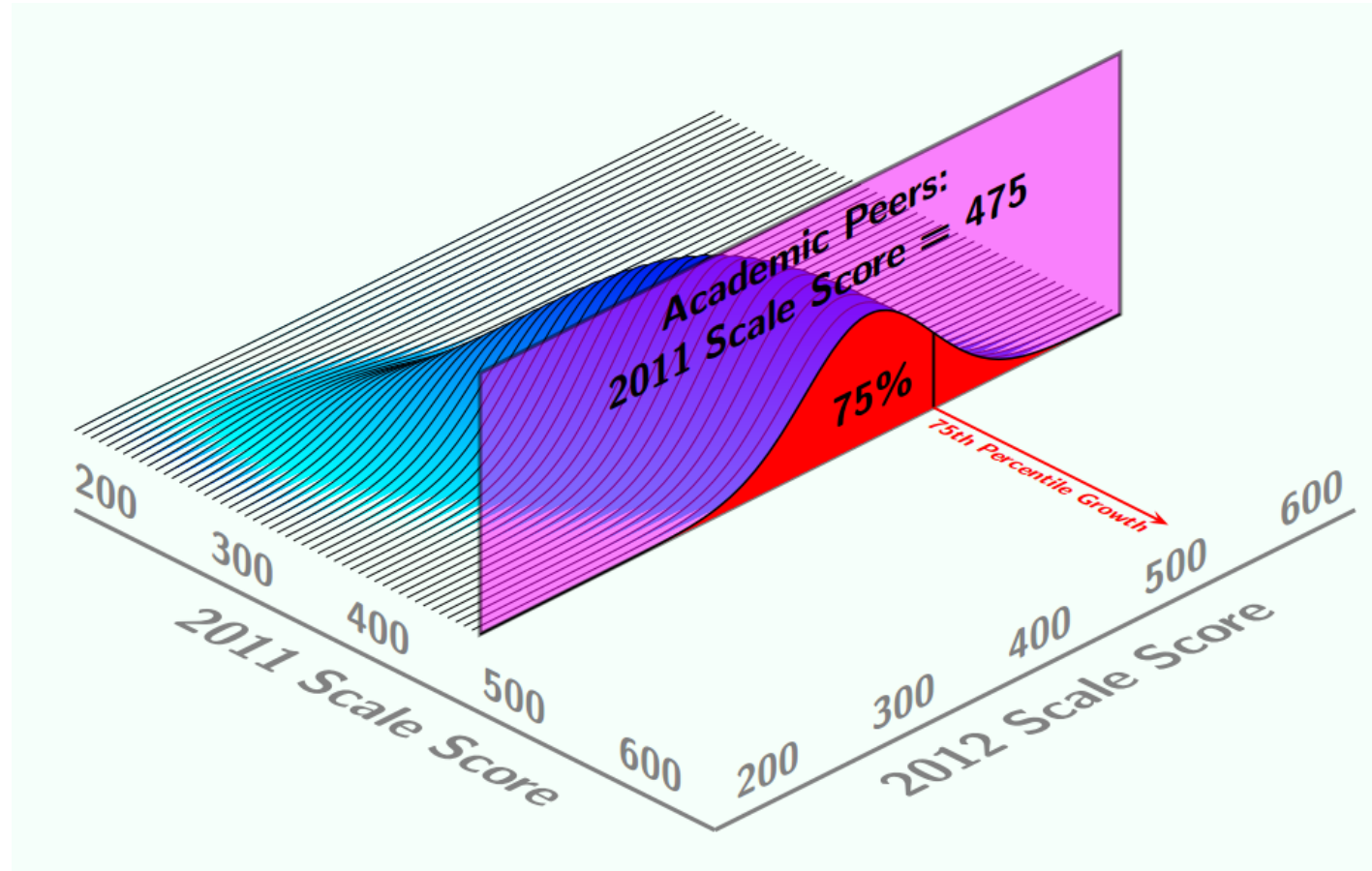
Identifying Relative Growth



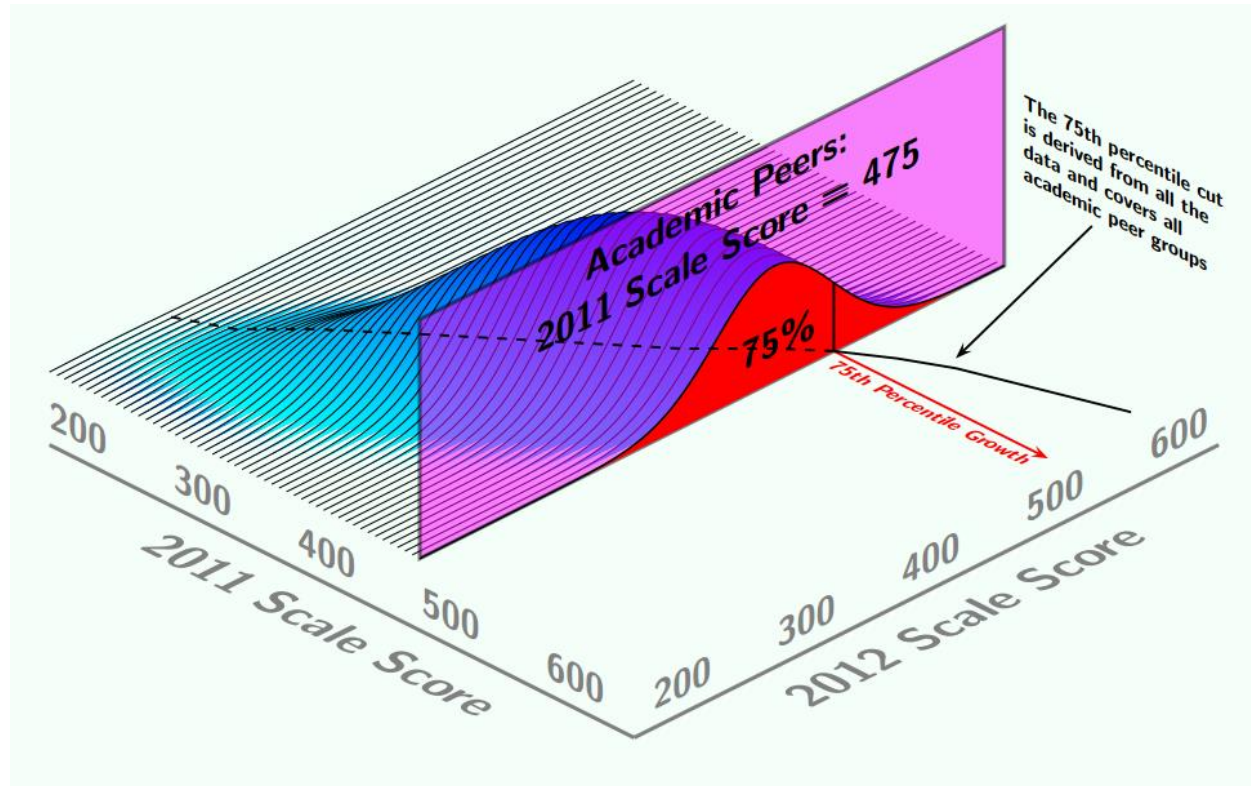
A Student Growth Percentile of 75%



Academic Peers Start from the Same Place

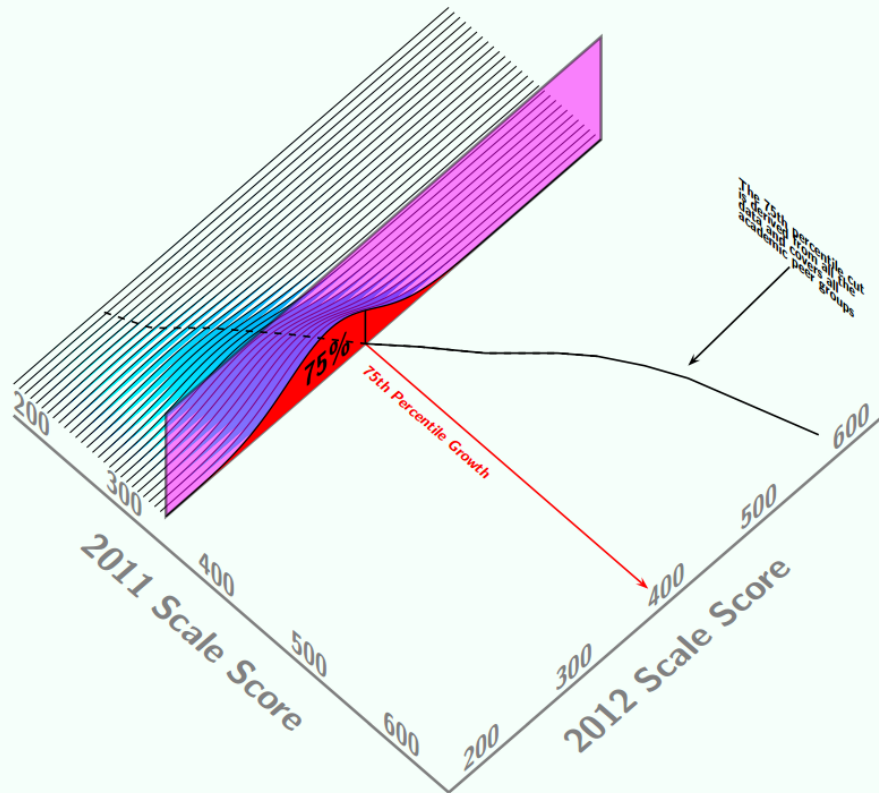


All Data Are Used to Determine a Student Growth Percentile

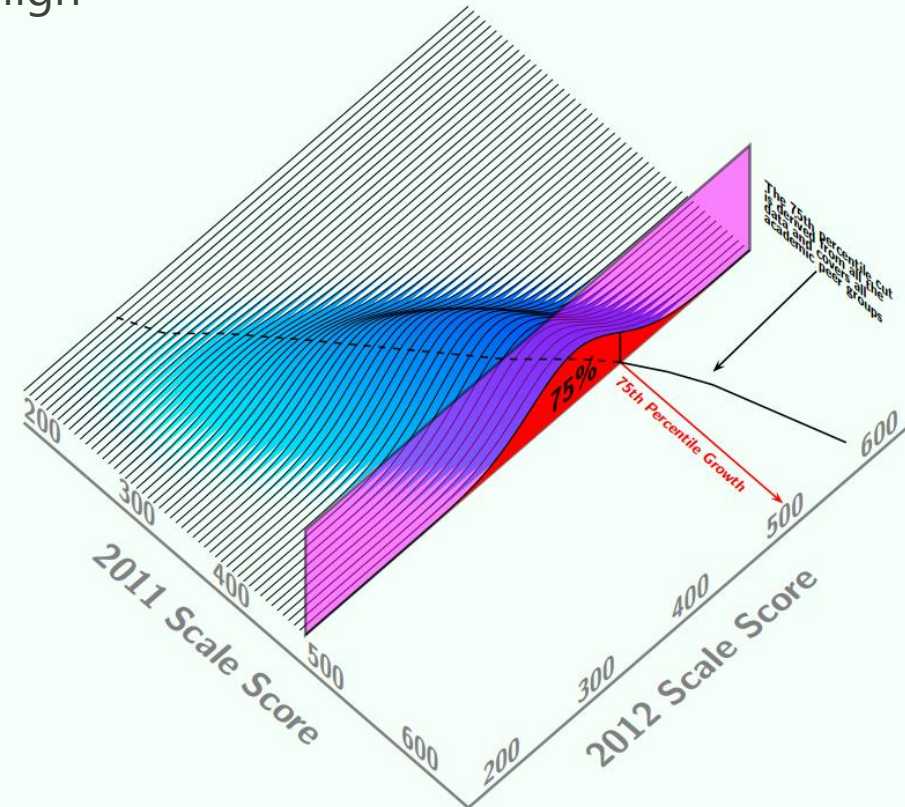


Low & High Achieving Students Demonstrate Growth

Low



High



For more information



Website: [www. i a a m a](http://www.iaam.a)



Division of Assessment and Student Information



Email student.information@k12.wa.us





Washington Office of Superintendent of
PUBLIC INSTRUCTION

Connect with us!



ospi.k12.wa.us



facebook.com/waospi



instagram.com/waospi



twitter.com/waospi



youtube.com/waospi



medium.com/waospi



linkedin.com/company/waospi