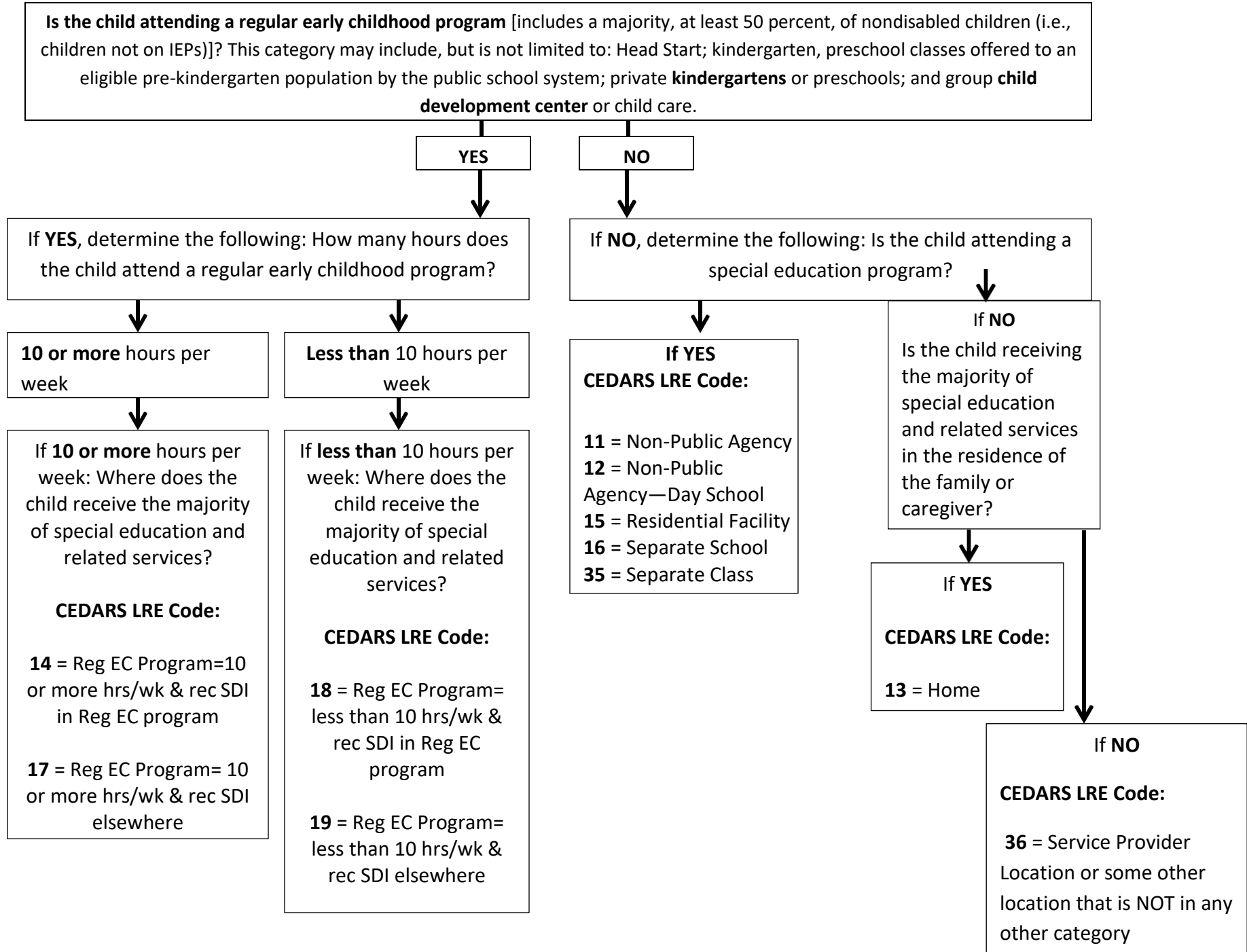


Decision Tree for coding Early Childhood Educational Environments (students ages 3 and 4 regardless of grade level and 5 year olds in PK)



Definitions:

Code Any Grade Level and Any Age

- 11 Non-Public Agency: Students with disabilities placed and lived in a state-approved non-public school by a public school district and receives services through an IEP
- 12 Non-Public Agency-Day School: Students with disabilities **placed but did not live** in a state-approved non-public school by a public school district and receives services through an IEP.

Code Grade Level PK AND Age 3 – 5

- 13 Early Childhood Home setting (Grade Level PK and age 3-5)
Report those special education students (aged 3 through 5) who received the majority of their special education and related services in the principal residence of the child's family or caregivers, and who did not attend a regular early childhood program or a special education program provided in a separate class, separate school, or residential facility. Include children who receive special education and related services both at home and in some other location, if they are receiving the majority of their services in the home. The term caregiver includes babysitters.
- 14 Regular Early Childhood Program at least 10 hours per week and receives the majority of hours of special education and related services in the Regular Early Childhood Program (Grade Level PK and age 3-5)
The child is receiving the majority of hours of special education and related services in the Regular Early Childhood Program (and the child attends a Regular Early Childhood Program at least 10 hours per week). *See Definition of Regular Early Childhood Program above.*
- 15 Early Childhood Residential Facility (Grade Level PK and age 3-5)
Report those special education students (aged 3 through 5) who received education programs in publicly or privately operated residential schools or residential medical facilities on an inpatient basis (do not include children who also attended a regular early childhood program). Report the child in this category even if the child also receives special education services in the home or in the service provider location or some other location.
- 16 Early Childhood Separate School (Grade Level PK and age 3-5)
Report those special education students (aged 3 through 5) who received education programs in public or private day schools designed specifically for children with disabilities (do not include children who also attended a regular early childhood program. Report the child in this category even if the child also receives special education services in the home or in the service provider location or some other location.
- 17 Regular Early Childhood Program at least 10 hours per week and receives the majority of hours of special education and related services in some other location (Grade Level PK and age 3-5)
The child is receiving the majority of hours of special education and related services in some other location (and the child attends a Regular Early Childhood Program at least 10 hours per week). *See Definition of Regular Early Childhood Program above.*
- 18 Regular Early Childhood Program less than 10 hours per week and receives the majority of hours of special education and related services in the Regular Early Childhood Program (Grade Level PK and age 3-5)
The child is receiving the majority of hours of special education and related services in the Regular Early Childhood Program (and the child attends a Regular Early Childhood Program less than 10 hours per week). *See Definition of Regular Early Childhood Program above.*

Code	Students with IEPs (Age 5 and grade level PK and Ages 3 and 4 regardless of grade level)
19	<p>Regular Early Childhood Program less than 10 hours per week and receives the majority of hours of special education and related services in some other location (Age 5 and grade level PK and Ages 3 and 4 regardless of grade level)</p> <p>The child is receiving the majority of hours of special education and related services in some other location (and the child attends a Regular Early Childhood Program less than 10 hours per week). <i>See Definition of Regular Early Childhood Program above.</i></p>
35	<p>Separate class (Age 5 and grade level PK and Ages 3 and 4 regardless of grade level)</p> <p>Report those students with IEPs (Age 5 and grade level PK and Ages 3 and 4 regardless of grade level) who attended a special education program in a class with less than 50 percent nondisabled children (do not include children who also attended a regular early childhood program. Separate class examples include, but are not limited to: regular school buildings, trailers or portables outside regular school buildings; child care facilities; hospital facilities on an outpatient basis; other community based settings.</p> <p>Report the child in this category even if the child <u>also</u> receives special education services in the home or in the service provider location or some other location.</p>
36	<p>Service provider location (Age 5 and grade level PK and Ages 3 and 4 regardless of grade level)</p> <p>Report those Students with IEPs (Age 5 and grade level PK and Ages 3 and 4 regardless of grade level) who received the majority of their special education and related services from a service provider or some other location that is not in any other category, and who did not attend an early childhood program or a special education program provided in a separate class, separate school, or residential facility. For example, speech instruction provided in:</p> <ul style="list-style-type: none"> • Private clinicians' offices. • Clinicians' offices located in school buildings. • Hospital facilities on an outpatient basis. • Libraries and other public locations. <p>Do not include children who also received special education at home. Children who received special education both in a service provider location and at home should be reported in the home category.</p>