

Annual Report 1999 – 2000

Certificates Issued and
Certificated Personnel
Placement Statistics



Dr. Terry Bergeson

State Superintendent of
Public Instruction

February 2001

ANNUAL REPORT, 1999–2000

CERTIFICATES ISSUED

AND

CERTIFICATED PERSONNEL PLACEMENT STATISTICS

Dr. Terry Bergeson
State Superintendent of Public Instruction and
Chief Executive Officer
State Board of Education

Andrew Griffin, Ed.D.
Assistant Superintendent
Higher Education, Community Outreach, and Staff Development

Lin Douglas, Ed.D.
Director
Professional Education and Certification

Richard Maloney, Ed.D.
Associate Director
Professional Education and Certification

This material is available in alternative format upon request. Contact Professional Education and Certification, phone: (360) 753-3222. Via world-wide web, for:

- Certification: www.k12.wa.us/cert or email: cert@ospi.wednet.edu
- Professional Education: www.k12.wa.us/profed or email: profed@ospi.wednet.edu

The Office of Superintendent of Public Instruction complies with all federal and state rules and regulations and does not discriminate on the basis of race, color, national origin, sex, disability, age, or marital status.

February 2001

TABLE OF CONTENTS

| | <u>Page</u> |
|---|-------------|
| List of Tables | vi |
| List of Figures | vi |
| Introduction | 1 |
| Summary of Findings | 2 |
| PART I - Certificates Issued, July 1, 1999 – June 30, 2000 | 7 |
| Introduction..... | 7 |
| Total Certificates Issued | 7 |
| First-Issue Certificates | 9 |
| Endorsements | 12 |
| Endorsements on Limited Certificates | 18 |
| Vocational Certificates | 20 |
| Certificates Issued to Out-of-State Candidates..... | 21 |
| Part II - Certificated Personnel Placement Statistics, 1999-2000 | 25 |
| Introduction..... | 25 |
| Program Completion Data | 25 |
| Placement Statistics | 27 |
| Endorsement Statistics | 31 |
| Placement Statistics by Racial/Ethnic Group..... | 35 |

LIST OF TABLES

| | | |
|----------|---|----|
| Table A. | Total Certificates Issued July 1, 1999 – June 30, 2000 | 8 |
| Table B. | Total Certificates Issued in 1999-2000 by Level: Initial (Beginning Level Certificate) Continuing and Professional (Advanced Level Certificate) | 9 |
| Table C. | Total First-Issue Certificates by Type | 10 |
| Table D. | Number of First-Issue Initial Certificates by Institution..... | 11 |
| Table E. | Endorsements on First Washington Teacher Certificates..... | 13 |
| Table F. | Endorsements on First Washington Teacher Certificates by In-State College/University | 15 |
| Table G. | Endorsements on Conditional Certificates 1999-2000 | 18 |
| Table H. | Endorsements on Emergency Certificates 1999-2000 | 19 |
| Table I. | Vocational Certificates Issued, July 1, 1999 - June 30, 2000 | 20 |
| Table J. | Top Ten States From Which Out-of-State Candidates Entered Washington, 1999-2000..... | 21 |
| Table K. | Number Completing Teacher Education Programs, 1972-1999..... | 26 |
| Table L. | Three-Year Placement Statistics | 28 |
| Table M. | Number and Percentage of Placements by Institution ¹ | 29 |
| Table N. | Percentage of Persons Employed..... | 30 |
| Table O. | Rank Order of Endorsement Areas by Percentages of Persons Employed in Schools, 1999-2000 | 32 |
| Table P. | Rank Order of Endorsement Areas by Percentages of Persons Employed in the Endorsement Area, 1999-2000 | 33 |
| Table Q. | Contracted and Substitute Employment by Racial/Ethnic Group of Persons Certificated in 1999-2000 | 35 |
| Table R. | Trends in Teacher Certification of Minority Group Members | 35 |

LIST OF FIGURES

| | | |
|-----------|--|----|
| Figure 1. | Five-Year Comparison of Total Certificates Issued | 8 |
| Figure 2. | Trends in Teacher Certification in Washington, 1972-1999..... | 25 |
| Figure 3. | First-Year Employment, 1998-99 Program Completers..... | 27 |
| Figure 4. | Percentage of Newly Certificated Teachers Employed | 31 |
| Figure 5. | Percentage of Certificates Earned by Minority Group Members..... | 36 |
| Figure 6. | Proportion of Specific Minority Group Members Certificated | 36 |

INTRODUCTION

The State Board of Education combines two related but separate reports (Certificates Issued and Certificated Personnel Placement Statistics) in its annual report regarding certification. The report is not intended to be a comprehensive study of the supply/demand ratio of certificated personnel in Washington State.

Part I of this report presents data on all certificates issued for various roles during the 1999-2000 year for both in-state and out-of-state applicants. Tables A through C show the total number of certificates issued in the state, comparing the activity to previous years and indicating the number of each type of certificate issued. Tables D and E present progressively more detailed information on the number of new certificate holders in the state of Washington, with Tables F and G giving detailed information regarding endorsements on teaching certificates issued during the 1999-2000 year. Tables H and I report some detailed information on limited certificates. Information regarding vocational certificates is found in Table J. The last table in Part I pertains to the "home" states of out-of-state applicants. Information for Part I is based totally on records in the office of Professional Education and Certification.

Part II presents placement statistics gathered during 1999–2000 on persons completing teacher education programs in Washington State the previous year. Information presented in Part II includes a comparison of the number of persons completing teacher education programs over the past 25 years, placement statistics for these people for the past three years, and placement statistics for each college/university in Washington as reported by that institution. The final three tables in Part II present placement information relative to endorsements and placement by racial/ethnic group. Information for Part II is based totally on follow-up information reported from the institutions.

SUMMARY OF FINDINGS

This report shows that the total number of certificates issued in the state in 1999–2000 increased by 2,266 (15.7%) from the 1998–99 total. The largest increases occurred in the number of teacher and vocational certificates issued. When all certification activity is counted, to include clock hour reporting and endorsements, the total is 24,325, an increase of more than 20% from the previous year.

- The 1698 vocational certificates issued in 1999–2000 represent an increase of over 300 from the previous year.
- Washington colleges and universities produced 3,298 teachers in the 1998–99 school year, a negligible decrease (less than 1%) from the previous year.
- The placement rate rose for the fourth year in a row in 1999–2000, from 58.6 percent of the 1997–98 graduates of Washington teacher education programs reporting contracted, certificated positions in 1998-99, to 63 percent of the 1998–99 graduates finding contracted positions in 1999–2000.
- Based on available information, 18 percent of those completing initial teacher certification programs in Washington in 1998–99 are minorities. Of those, 344 individuals, or 66.4 percent, were hired as teachers.
- Twenty-six percent of the individuals receiving their first initial teaching certificates in Washington completed teacher education programs outside the state.
- The number of limited certificates (those not meeting minimum requirements for a first-level certificate) increased by 35% from the previous year. Of these limited certificates, the number of emergency substitute certificates increased by more than 75%, to 762.

- Even with recent increases, the percent of all active teachers with limited certificates remains less than 1%.
- The greatest number of out-of-state recipients of teacher and educational staff associate certificates were from California, while the greatest number of out-of-state recipients of administrator certificates were from Oregon.
- The top five areas of endorsements on initial teaching certificates awarded during 1999–2000 were elementary education (3,332), English (739), special education (691), early childhood education (621), and history (552).
- The eight endorsement areas least often obtained were in specific world languages, with only one endorsement being issued for Ukrainian, Thai, Polish, Italian, Afrikaans, Norwegian, and Korean.
- The highest placement rate (50% or higher) of teachers in their respective endorsement area occurred in the fields of computer science, family and consumer sciences education, agriculture, mathematics, business education, science, and elementary education.
- The lowest placement rate (below 5%) of teachers in their respective endorsement area occurred in the fields of early childhood special education, marketing education, speech, psychology, economics, religion, and sociology, with no placements being made in these last three endorsement areas.

PART I

CERTIFICATES ISSUED

July 1, 1999 – June 30, 2000

PART I - CERTIFICATES ISSUED, JULY 1, 1999 – JUNE 30, 2000

Introduction

Each year the State Board of Education prepares a comprehensive report of the number and type of certificates issued. The information in this report includes both certificates issued to individuals who completed programs at Washington colleges/universities and certificates issued to individuals applying for Washington certification who completed preparation programs at institutions outside the state of Washington. It also includes information regarding endorsements on teaching certificates.

Total Certificates Issued

The total number of certificates issued to in-state and out-of-state applicants¹ from July 1, 1999–June 30, 2000, was 16,651.² A breakdown by type (teacher, administrator, educational staff associate [ESA], and vocational) and by source (in state, out of state) is shown in Table A. The figures include first certificate issuance, renewals, reinstatements, movement from the initial level of certification to the continuing level, and conversion of older types of certificates (e.g., provisional) to new certificate types (e.g., initial). All types of limited certificates (substitute, emergency, emergency substitute, conditional, and exchange teacher) are also included in the 16,651 certificates issued.

¹ For teachers, administrators, and ESAs, an “in-state” applicant is one who completed the approved program for the certificate at a Washington college/university. An “out-of-state” applicant completed the course work at an institution outside the state of Washington. All vocational applicants are considered “in-state.”

² While the total, 16,651, reflects the number of certificates issued in 1999-2000, it does not reflect all certificate activity. For example, an individual issued a continuing certificate after August 1987 needs to complete 150 clock hours every five years to maintain that certificate. This total does not include the activity required to extend the validity of those certificates. Nor does it reflect the adding of endorsements to existing certificates. When all certification activity is included, the total is 24,325. This represents an increase of 20% over the previous year.

Table A. Total Certificates Issued July 1, 1999 – June 30, 2000

| | Total | In-State | Out-of-State |
|-----------------------------|---------------|---------------|--------------|
| Teacher | 13,265 | 11,013 | 2,252 |
| Administrator | 686 | 580 | 106 |
| Educational Staff Associate | 1,002 | 844 | 158 |
| Vocational | 1,698 | 1,698 | N/a |
| Total | 16,651 | 14,135 | 2,516 |

Figure 1 compares the total certificates issued over five years, 1995–2000. In 1996–97, the number of teacher certificates increased, while the number of vocational certificates issued decreased by 20 percent. In 1997–98, teacher certificates again increased, while others were relatively stable. In 1998–99, certificates decreased because of a change in the certificate expiration date. Certificates due to expire August 31, 1998 were extended to June 30, 1999, so many of the affected certificate renewals were issued after June 30. The 1999–2000 report was similar to 1998-99.

Figure 1. Five-Year Comparison of Total Certificates Issued

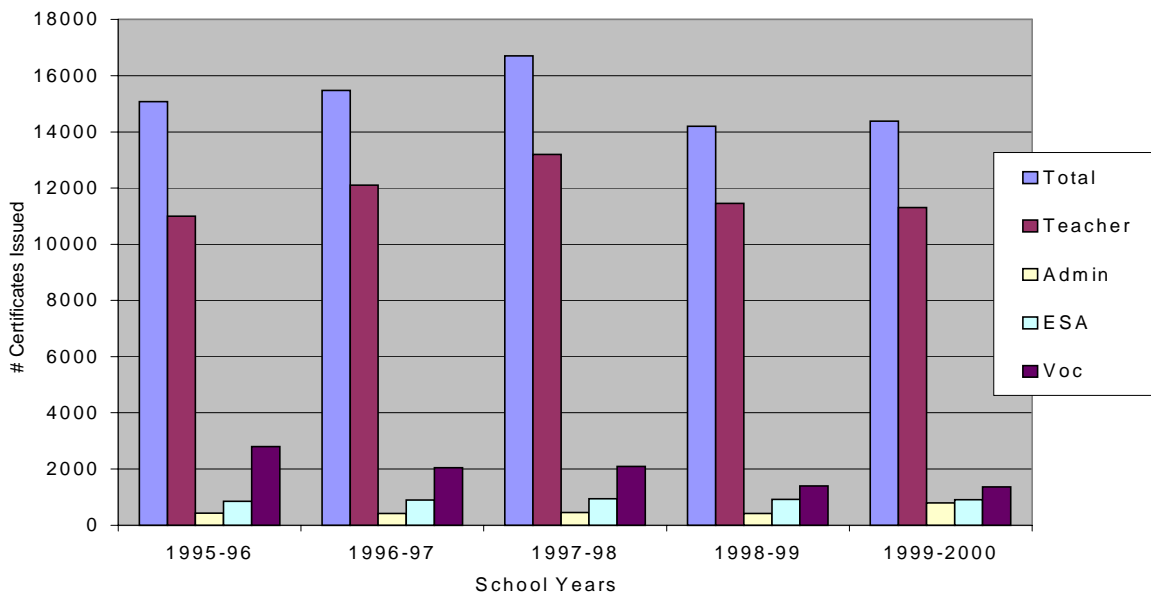


Table B provides more information about the total number of certificates issued. Here, the number of regular certificates issued as well as the types and number of limited

certificates are presented. The number of limited certificates issued in 1999–2000 exceeded by 35 percent the number issued the previous year, continuing a trend. The professional teaching certificate (the second level of certification under the system going into effect on September 1, 2001) was issued for the first time in 1998–99, and this limited pilot program ended in 1999-2000.

Table B. Total Certificates Issued in 1999-2000 by Level: Initial (Beginning Level Certificate) Continuing and Professional (Advanced Level Certificate)

| | Number of Certs | Percentage Change From 1998-1999 |
|---|--------------------|--|
| Initial teaching certificates issued in 1999-2000 | 7813 | 10.2% |
| Continuing teaching certificates issued in 1999-2000 | 2935 | 27.6% |
| Professional teaching certificates issued in 1999-2000 | 4 | n/a |
| Initial administrator certificates issued in 1999-2000 | 548 | -8.4% |
| Continuing administrator certificates issued in 1999-2000 | 132 | -31.3% |
| Initial ESA certificates issued in 1999-2000 | 726 | 7.4% |
| Continuing ESA certificates issued in 1999-2000 | 235 | 12.4% |
| Vocational certificates issued in 1999-2000 | 1698 | 23.9% |
| Exchange certificates issued in 1999-2000 | 6 | -62.5% |
| Instructional specialist certificates issued in 1999-2000 | 0 | n/a |
| Internship certificates issued in 1999-2000 | 0 | n/a |
| Limited certificates issued in 1999-2000 | 2551 | 35.2% |
| Conditional certificates | 173 | 101.2% |
| Emergency certificates* | 807 | 77.4% |
| Substitute certificates | 1571 | 16.7% |
| Grand Total: | 16320 | 13.5% |

*Includes 762 emergency substitute certificates.

First-Issue Certificates

Table C addresses new certificate holders in the state; it does not include figures for limited certificates, renewals, reinstatements or conversions, but rather indicates the number of certificates issued to persons who had never held certification for that role in Washington. The totals do not indicate the number of people but more precisely the number of certificates. It is common, especially for out-of-state applicants, to qualify for more than one certificate. For example, many applicants for school principal certification apply concurrently for a teaching certificate.

Table C. Total First-Issue Certificates by Type

| | | In State | Out of State | Total | |
|---|------------|----------|--------------|-------|-------|
| <u>Teacher Certificates</u> | Initial | 3785 | 1,593 | 5,378 | |
| | Continuing | 0 | 93 | 93 | |
| <u>Administrator Certificates</u> | | | | | |
| Principal | Initial | 322 | 70 | 392 | |
| | Continuing | 0 | 3 | 3 | |
| Superintendent | Initial | 46 | 16 | 62 | |
| | Continuing | 0 | 2 | 2 | |
| Program Administrator | Initial | 22 | 15 | 37 | |
| | Continuing | 0 | 0 | 0 | |
| <u>Educational Staff Associate Certificates</u> | | | | | |
| School Speech Language Pathologist/Audiologist | Initial | 69 | 45 | 114 | |
| | Continuing | 0 | 2 | 2 | |
| School Counselor | Initial | 173 | 49 | 222 | |
| | Continuing | 0 | 1 | 1 | |
| School Nurse | Initial | 57 | 6 | 63 | |
| | Continuing | 0 | 0 | 0 | |
| School Occupational Therapist | Initial | 40 | 6 | 46 | |
| | Continuing | 0 | 0 | 0 | |
| School Physical Therapist | Initial | 22 | 3 | 25 | |
| | Continuing | 0 | 0 | 0 | |
| School Psychologist | Initial | 29 | 37 | 66 | |
| | Continuing | 0 | 0 | 0 | |
| School Social Worker | Initial | 40 | 5 | 45 | |
| | Continuing | 0 | 0 | 0 | |
| Vocational* | | 915 | n/a | 915 | |
| *not identified by in-state/out-of-state | | Totals | 5,520 | 1,946 | 7,466 |

Table D sets forth more detailed information about certificates issued to in-state applicants reported in Table C. Table D indicates the number of first-issue initial certificates for individuals completing programs at each Washington college/university. Not all colleges/universities are approved to recommend certification for all types of certificated roles.

In 1999–2000, nine of 22 programs were postbaccalaureate or master's degree only. Seventeen institutions offer a combined master's degree/teacher certification program. Most institutions offering an undergraduate program make that program available to postbaccalaureate students as well.

Table D. Number of First-Issue Initial Certificates by Institution*

July 1, 1999–June 30, 2000

AU = Antioch University, CU = City University, CWU = Central Washington University, EWU = Eastern Washington University, GU = Gonzaga University, HC = Heritage College, NWC = Northwest College, PLU = Pacific Lutheran University, PO = Pacific Oaks College, SMC = Saint Martin's College, SPU = Seattle Pacific University, SU = Seattle University, TESC = The Evergreen State College, UPS = University of Puget Sound, UW = University of Washington, UW-B=University of Washington-Bothell, UW-T=University of Washington-Tacoma, WWC = Walla Walla College, WSU = Washington State University, WWU = Western Washington University, WmC = Whitman College, WwC = Whitworth College

| Type of Certificate | AU | CU | CWU | EWU | GU | HC | NWC | PLU | PO | SMC | SPU | SU | TESC | UPS | UW | UWB | UWT | WWC | WSU | WWU | WmC | WwC |
|-------------------------------|----|-----|-----|-----|----|----|-----|-----|----|-----|-----|----|------|-----|-----|-----|-----|-----|-----|-----|-----|-----|
| TEACHER | 92 | 166 | 829 | 477 | 91 | 80 | 39 | 169 | 39 | 99 | 119 | 92 | 36 | 53 | 176 | 55 | 3 | 39 | 373 | 569 | 9 | 168 |
| ADMINISTRATOR | | | | | | | | | | | | | | | | | | | | | | |
| Principal | -- | 38 | 35 | 24 | 9 | 50 | -- | 14 | -- | 1 | 43 | 9 | -- | 14 | 19 | -- | -- | -- | 26 | 30 | -- | 5 |
| Program Administrator | -- | -- | 11 | -- | -- | 4 | -- | 1 | -- | -- | -- | -- | -- | -- | 4 | -- | -- | -- | -- | -- | -- | -- |
| Superintendent | -- | -- | -- | -- | -- | -- | -- | -- | -- | -- | 8 | 1 | -- | -- | 2 | -- | -- | -- | 32 | -- | -- | -- |
| EDUCATIONAL STAFF ASSOCIATE** | | | | | | | | | | | | | | | | | | | | | | |
| Counselor | -- | 57 | 3 | 15 | 7 | 19 | -- | -- | -- | 10 | 7 | 14 | -- | 3 | 7 | -- | -- | -- | 3 | 9 | -- | 12 |
| Psychologist | -- | 1 | 1 | 5 | 1 | -- | -- | -- | -- | -- | -- | 9 | -- | -- | 4 | -- | -- | -- | -- | -- | -- | -- |
| Social Worker | -- | -- | -- | 18 | -- | -- | -- | -- | -- | -- | 1 | -- | -- | -- | 15 | -- | -- | 4 | -- | -- | -- | -- |

* Based on OSPI records of certificates issued. Totals may vary significantly from year to year, depending on the date the verification of program completion lists are sent to OSPI for processing. For example, while the University of Washington–Tacoma shows only 3 receiving teaching certificates in 1999–2000, 51 students actually completed their teacher preparation program in 1999–2000. This table includes certificates issued before June 30, 2000. Some individuals who completed a program this year were issued a certificate after July 1, 2000.

** Four other categories of Educational Staff Associates (ESAs) receive certification by completing degree programs approved by appropriate national accrediting agencies, holding valid Washington State licenses (when required), and completing a 30 clock hour course approved by the State Board of Education (SBE). They do not complete SBE approved preparation programs, so they are not included on this chart. Those four ESA categories are School Speech Language Pathologist or Audiologist, School Nurse, School Occupational Therapist, and School Physical Therapist.

Endorsements

All initial teaching certificates carry subject endorsements. Applicants for continuing certificates had to qualify for two endorsements until September 1, 2000. After that date the continuing certificate only requires one endorsement. The figures in Table E indicate the number of each type of endorsement listed on first-issue teaching certificates. Since many certificate recipients will have two or more endorsements, the total number of endorsements exceeds the number of certificates issued.

The greatest number of endorsements were issued in elementary education (3,332), English (739), special education (691), early childhood education (621), history (552), social studies (432), reading (407), psychology (391), physical education (280), and math (269). Three or fewer endorsements each were awarded to individuals in the following designated foreign languages: Chinese (3), Ukrainian (1), Thai (1), Polish (1), Italian (1), Afrikaans (1), Norwegian (1), and Korean (1).

Fifty percent or more of the following endorsements were issued to candidates from out of state: Ukrainian (100 percent), Thai (100 percent), Polish (100 percent), Italian (100 percent), Afrikaans (100 percent), Learning Resources (79 percent), Latin (75 percent), American Sign Language (75 percent), Russian (56 percent), French (54 percent), Philosophy (50 percent), and Comparative Religion (50 percent).

Less than 30 percent of the following endorsements were issued to candidates from out of state: agriculture (28 percent), business education (27 percent), marketing education (27 percent), anthropology (25 percent), sociology (25 percent), earth science (24 percent), Spanish (23 percent), Psychology (23 percent), History (20 percent), Choral Music (18 percent), Instrumental Music (18 percent), bilingual education (17 percent),

reading (13 percent), economics (11 percent), traffic safety (9 percent), Chinese (0 percent), Norwegian (0 percent), and Korean (0 percent).

Table E. Endorsements on First Washington Teacher Certificates

| <u>Endorsement</u> | <u>In State</u> | <u>Out of State</u> | <u>Total</u> |
|-----------------------------------|-----------------|---------------------|--------------|
| Afrikaans | 0 | 1 | 1 |
| Agriculture Education | 23 | 9 | 32 |
| American Sign Language | 1 | 3 | 4 |
| Anthropology | 46 | 15 | 61 |
| Art | 116 | 53 | 169 |
| Bilingual Education | 39 | 8 | 47 |
| Biology | 180 | 83 | 263 |
| Business Education | 48 | 18 | 66 |
| Chemistry | 54 | 34 | 88 |
| Chinese | 3 | 0 | 3 |
| Choral Music | 81 | 18 | 99 |
| Comparative Religion | 7 | 7 | 14 |
| Drama | 39 | 29 | 68 |
| Early Childhood Education | 397 | 224 | 621 |
| Early Childhood Special Education | 49 | 44 | 93 |
| Earth Science | 39 | 12 | 51 |
| Economics | 25 | 3 | 28 |
| Elementary Education | 2485 | 847 | 3332 |
| English | 493 | 246 | 739 |
| English/Second Language | 177 | 82 | 259 |
| English/Language Arts | 68 | 46 | 114 |
| Family and Consumer Sciences Ed | 43 | 20 | 63 |
| French | 28 | 33 | 61 |
| Geography | 20 | 13 | 33 |
| German | 28 | 12 | 40 |
| Health | 132 | 59 | 191 |
| History | 440 | 112 | 552 |
| Instructional Technology | 27 | 18 | 45 |
| Instrumental Music | 72 | 16 | 88 |
| Italian | 0 | 1 | 1 |
| Japanese | 12 | 7 | 19 |
| Journalism | 21 | 9 | 30 |
| Korean | 1 | 0 | 1 |
| Latin | 1 | 3 | 4 |
| Learning Resources | 6 | 23 | 29 |
| Marketing Education | 35 | 13 | 48 |
| Mathematics | 169 | 100 | 269 |
| Music | 84 | 65 | 149 |
| Norwegian | 1 | 0 | 1 |
| Philosophy | 9 | 9 | 18 |
| Physical Education | 180 | 100 | 280 |
| Physics | 32 | 18 | 50 |
| Polish | 0 | 1 | 1 |
| Political Science | 69 | 39 | 108 |

| <u>Endorsement</u> | <u>In State</u> | <u>Out of State</u> | <u>Total</u> |
|----------------------|-----------------|---------------------|--------------|
| Psychology | 303 | 88 | 391 |
| Reading | 355 | 52 | 407 |
| Russian | 4 | 5 | 9 |
| Science | 110 | 67 | 177 |
| Social Studies | 289 | 143 | 432 |
| Sociology | 117 | 38 | 155 |
| Spanish | 204 | 60 | 264 |
| Special Education | 481 | 210 | 691 |
| Speech | 46 | 27 | 73 |
| Technology Education | 16 | 12 | 28 |
| Thai | 0 | 1 | 1 |
| Traffic Safety | 29 | 3 | 32 |
| Ukrainian | 0 | 1 | 1 |

The in-state figures from the previous table are further broken down in Table F to indicate the number of each type of endorsement on certificates issued to individuals completing programs at each of the state's colleges/universities. Not all colleges/universities are approved to grant all endorsements. During the reporting year an individual could add endorsements to certificates by completing the required number of credits in the subject and prescribed essential areas of study. The endorsement system changed from credit-based to program-completion as of September 1, 2000, so future reports will reflect this change. If an individual was issued a certificate between July 1999 and June 2000 and added an endorsement to the certificate prior to June 30, 2000, the endorsement will be included in Table F.

Table F. Endorsements on First Washington Teacher Certificates by In-State College/University

See Table D for key to college abbreviation.

| Endorsement | AU | CU | CWU | EWU | GU | HC | NWC | PLU | PO | SMC | SPU | SU | TESC | UPS | UW | UWB | UWT | WWC | WSU | WWU | WmC | WwC |
|-----------------------------|----|-----|-----|-----|----|----|-----|-----|----|-----|-----|----|------|-----|-----|-----|-----|-----|-----|-----|-----|-----|
| Agriculture | 0 | 0 | 0 | 0 | 0 | 0 | 0 | 0 | 0 | 0 | 0 | 0 | 0 | 0 | 0 | 0 | 0 | 0 | 22 | 1 | 0 | 0 |
| American Sign Language | 0 | 0 | 0 | 0 | 0 | 0 | 0 | 0 | 0 | 0 | 0 | 0 | 0 | 0 | 0 | 0 | 0 | 0 | 0 | 1 | 0 | 0 |
| Anthropology | 2 | 4 | 9 | 1 | 0 | 1 | 0 | 3 | 2 | 0 | 1 | 1 | 1 | 0 | 2 | 0 | 0 | 0 | 4 | 14 | 0 | 0 |
| Arabic | 0 | 0 | 0 | 0 | 0 | 0 | 0 | 0 | 0 | 0 | 0 | 0 | 0 | 0 | 0 | 0 | 0 | 0 | 0 | 0 | 0 | 0 |
| Art | 2 | 10 | 24 | 23 | 4 | 1 | 1 | 2 | 1 | 2 | 2 | 2 | 4 | 5 | 1 | 2 | 0 | 1 | 7 | 13 | 0 | 6 |
| Bilingual Education | 0 | 0 | 11 | 0 | 0 | 13 | 0 | 0 | 3 | 0 | 1 | 0 | 0 | 0 | 1 | 0 | 0 | 0 | 9 | 1 | 0 | 0 |
| Biology | 9 | 6 | 30 | 21 | 0 | 1 | 1 | 14 | 1 | 5 | 10 | 2 | 4 | 2 | 14 | 1 | 0 | 5 | 25 | 21 | 1 | 7 |
| Business Education | 0 | 0 | 33 | 12 | 1 | 0 | 0 | 1 | 0 | 0 | 0 | 0 | 0 | 0 | 0 | 0 | 0 | 0 | 0 | 0 | 0 | 0 |
| Chemistry | 2 | 1 | 5 | 10 | 4 | 1 | 0 | 1 | 0 | 0 | 3 | 0 | 1 | 0 | 1 | 0 | 0 | 0 | 12 | 10 | 0 | 3 |
| Chinese | 0 | 0 | 0 | 0 | 0 | 0 | 0 | 0 | 0 | 0 | 0 | 0 | 0 | 0 | 1 | 0 | 0 | 0 | 0 | 1 | 0 | 1 |
| Choral Music | 0 | 1 | 26 | 9 | 2 | 0 | 4 | 5 | 0 | 0 | 3 | 0 | 0 | 3 | 13 | 1 | 0 | 0 | 7 | 4 | 0 | 3 |
| Comparative Religion | 0 | 0 | 2 | 0 | 2 | 0 | 0 | 0 | 0 | 1 | 0 | 0 | 0 | 0 | 0 | 0 | 0 | 0 | 0 | 0 | 0 | 0 |
| Danish | 0 | 0 | 0 | 0 | 0 | 0 | 0 | 0 | 0 | 0 | 0 | 0 | 0 | 0 | 0 | 0 | 0 | 0 | 0 | 0 | 0 | 0 |
| Drama | 4 | 5 | 5 | 3 | 0 | 1 | 0 | 1 | 1 | 3 | 0 | 0 | 0 | 0 | 1 | 3 | 0 | 0 | 3 | 7 | 1 | 1 |
| Early Childhood Educ. | 0 | 6 | 207 | 17 | 0 | 5 | 0 | 2 | 34 | 11 | 2 | 0 | 1 | 0 | 0 | 0 | 1 | 4 | 40 | 51 | 0 | 7 |
| Early Childhood Spec. Educ. | 0 | 1 | 10 | 1 | 6 | 0 | 0 | 0 | 0 | 4 | 0 | 0 | 0 | 0 | 13 | 0 | 0 | 0 | 4 | 7 | 0 | 2 |
| Earth Science | 1 | 1 | 6 | 5 | 0 | 1 | 0 | 4 | 0 | 2 | 0 | 0 | 0 | 1 | 1 | 0 | 0 | 0 | 6 | 8 | 0 | 3 |
| Economics | 1 | 1 | 3 | 0 | 1 | 0 | 0 | 2 | 2 | 2 | 1 | 1 | 1 | 1 | 1 | 1 | 0 | 1 | 1 | 4 | 0 | 1 |
| Elementary Education | 54 | 166 | 546 | 280 | 61 | 64 | 29 | 98 | 39 | 63 | 66 | 26 | 20 | 30 | 104 | 54 | 3 | 23 | 261 | 347 | 4 | 117 |
| English | 18 | 18 | 41 | 38 | 13 | 5 | 16 | 33 | 5 | 14 | 27 | 13 | 17 | 8 | 41 | 5 | 0 | 4 | 41 | 88 | 3 | 39 |
| English/Second Language | 0 | 1 | 57 | 9 | 0 | 13 | 8 | 9 | 4 | 0 | 3 | 1 | 1 | 0 | 2 | 0 | 0 | 1 | 19 | 30 | 0 | 16 |
| English/Language Arts | 3 | 1 | 6 | 1 | 1 | 13 | 0 | 6 | 0 | 7 | 5 | 2 | 1 | 2 | 4 | 0 | 0 | 0 | 6 | 4 | 0 | 5 |
| Family & Consumer Sci. Ed. | 0 | 6 | 15 | 1 | 0 | 2 | 0 | 0 | 0 | 2 | 9 | 0 | 0 | 0 | 0 | 2 | 0 | 0 | 3 | 1 | 0 | 1 |
| French | 0 | 2 | 0 | 5 | 1 | 1 | 0 | 2 | 0 | 1 | 2 | 0 | 1 | 1 | 3 | 1 | 0 | 0 | 1 | 3 | 0 | 3 |

Table F. Endorsements on First Washington Teacher Certificates by In-State College/University (continued)

See Table D for key to college abbreviation.

| Endorsement | AU | CU | CWU | EWU | GU | HC | NWC | PLU | PO | SMC | SPU | SU | TESC | UPS | UW | UWB | UWT | WWC | WSU | WWU | WmC | WwC |
|--------------------------|----|----|-----|-----|----|----|-----|-----|----|-----|-----|----|------|-----|----|-----|-----|-----|-----|-----|-----|-----|
| Geography | 0 | 0 | 13 | 3 | 0 | 0 | 0 | 0 | 0 | 0 | 0 | 0 | 0 | 0 | 0 | 2 | 0 | 0 | 1 | 0 | 0 | 0 |
| German | 1 | 1 | 4 | 0 | 2 | 0 | 0 | 1 | 0 | 0 | 3 | 2 | 0 | 1 | 1 | 1 | 0 | 1 | 3 | 4 | 1 | 1 |
| Greek | 0 | 0 | 0 | 0 | 0 | 0 | 0 | 0 | 0 | 0 | 0 | 0 | 0 | 0 | 0 | 0 | 0 | 0 | 0 | 0 | 0 | 0 |
| Health | 0 | 5 | 38 | 16 | 7 | 3 | 0 | 18 | 0 | 6 | 7 | 0 | 0 | 3 | 0 | 1 | 0 | 6 | 3 | 3 | 0 | 11 |
| Hebrew | 0 | 0 | 0 | 0 | 0 | 0 | 0 | 0 | 0 | 0 | 0 | 0 | 0 | 0 | 0 | 0 | 0 | 0 | 0 | 0 | 0 | 0 |
| Hindi | 0 | 0 | 0 | 0 | 0 | 0 | 0 | 0 | 0 | 0 | 0 | 0 | 0 | 0 | 0 | 0 | 0 | 0 | 0 | 0 | 0 | 0 |
| History | 17 | 17 | 61 | 48 | 14 | 2 | 8 | 30 | 4 | 25 | 21 | 9 | 7 | 7 | 27 | 4 | 0 | 6 | 25 | 73 | 2 | 24 |
| Instructional Technology | 0 | 2 | 3 | 2 | 1 | 0 | 0 | 4 | 0 | 8 | 0 | 0 | 0 | 0 | 0 | 0 | 0 | 0 | 0 | 3 | 1 | 1 |
| Instrumental Music | 0 | 0 | 23 | 6 | 1 | 0 | 0 | 7 | 0 | 0 | 3 | 0 | 0 | 2 | 13 | 0 | 0 | 0 | 6 | 7 | 0 | 0 |
| Italian | 0 | 0 | 0 | 0 | 0 | 0 | 0 | 0 | 0 | 0 | 0 | 0 | 0 | 0 | 0 | 0 | 0 | 0 | 0 | 0 | 0 | 0 |
| Japanese | 1 | 1 | 3 | 0 | 0 | 0 | 0 | 0 | 0 | 0 | 0 | 1 | 0 | 0 | 1 | 0 | 0 | 0 | 1 | 4 | 0 | 0 |
| Journalism | 2 | 2 | 1 | 0 | 0 | 3 | 0 | 1 | 0 | 2 | 0 | 1 | 1 | 0 | 2 | 1 | 0 | 0 | 2 | 1 | 1 | 1 |
| Korean | 0 | 0 | 0 | 0 | 0 | 0 | 0 | 0 | 0 | 0 | 0 | 0 | 0 | 0 | 1 | 0 | 0 | 0 | 0 | 0 | 0 | 0 |
| Latin | 0 | 0 | 0 | 0 | 0 | 0 | 0 | 0 | 0 | 0 | 1 | 0 | 0 | 0 | 0 | 0 | 0 | 0 | 0 | 0 | 0 | 0 |
| Learning Resources | 0 | 0 | 1 | 5 | 0 | 0 | 0 | 0 | 0 | 0 | 0 | 0 | 0 | 0 | 0 | 0 | 0 | 0 | 0 | 0 | 0 | 0 |
| Marketing Education | 2 | 5 | 6 | 2 | 1 | 1 | 0 | 0 | 0 | 4 | 0 | 4 | 0 | 0 | 3 | 0 | 0 | 0 | 1 | 1 | 0 | 5 |
| Mathematics | 5 | 5 | 26 | 24 | 2 | 6 | 0 | 11 | 1 | 4 | 5 | 1 | 1 | 5 | 6 | 0 | 0 | 6 | 18 | 27 | 0 | 13 |
| Music | 0 | 0 | 24 | 9 | 3 | 0 | 1 | 3 | 1 | 0 | 3 | 0 | 0 | 5 | 13 | 0 | 0 | 0 | 6 | 10 | 0 | 5 |
| Norwegian | 0 | 0 | 7 | 0 | 0 | 0 | 0 | 1 | 0 | 0 | 0 | 0 | 0 | 0 | 0 | 0 | 0 | 0 | 0 | 0 | 0 | 0 |
| Philosophy | 0 | 0 | 2 | 0 | 2 | 0 | 0 | 0 | 2 | 0 | 0 | 0 | 0 | 0 | 0 | 0 | 0 | 0 | 1 | 1 | 0 | 0 |
| Physical Education | 0 | 3 | 43 | 42 | 6 | 4 | 0 | 15 | 1 | 7 | 6 | 0 | 0 | 3 | 1 | 1 | 0 | 5 | 1 | 16 | 0 | 15 |
| Physics | 3 | 3 | 5 | 6 | 1 | 1 | 0 | 0 | 0 | 1 | 1 | 0 | 0 | 1 | 5 | 0 | 0 | 0 | 3 | 2 | 0 | 0 |
| Political Science | 3 | 5 | 11 | 0 | 1 | 2 | 0 | 2 | 3 | 5 | 1 | 5 | 1 | 0 | 7 | 2 | 0 | 0 | 1 | 18 | 0 | 2 |
| Portuguese | 0 | 0 | 0 | 0 | 0 | 0 | 0 | 1 | 0 | 0 | 0 | 0 | 0 | 0 | 0 | 0 | 0 | 0 | 0 | 1 | 0 | 0 |
| Psychology | 4 | 24 | 27 | 4 | 39 | 6 | 12 | 12 | 3 | 12 | 14 | 3 | 6 | 7 | 18 | 9 | 0 | 3 | 19 | 59 | 0 | 20 |

Table F. Endorsements on First Washington Teacher Certificates by In-State College/University (continued)

See Table D for key to college abbreviation.

| Endorsement | AU | CU | CWU | EWU | GU | HC | NWC | PLU | PO | SMC | SPU | SU | TESC | UPS | UW | UWB | UWT | WWC | WSU | WWU | WmC | WwC |
|----------------------|----|----|-----|-----|----|----|-----|-----|----|-----|-----|----|------|-----|----|-----|-----|-----|-----|-----|-----|-----|
| Reading | 0 | 0 | 68 | 190 | 7 | 0 | 0 | 16 | 0 | 36 | 3 | 0 | 1 | 0 | 0 | 0 | 0 | 0 | 16 | 17 | 0 | 1 |
| Russian | 2 | 0 | 0 | 0 | 0 | 0 | 0 | 0 | 0 | 0 | 0 | 0 | 0 | 0 | 2 | 0 | 0 | 0 | 0 | 0 | 0 | 0 |
| Science | 5 | 0 | 11 | 13 | 0 | 0 | 0 | 11 | 0 | 3 | 6 | 1 | 3 | 0 | 14 | 0 | 0 | 0 | 6 | 31 | 0 | 5 |
| Social Studies | 10 | 6 | 36 | 35 | 9 | 1 | 5 | 15 | 1 | 21 | 15 | 5 | 8 | 4 | 17 | 1 | 0 | 0 | 12 | 72 | 0 | 7 |
| Sociology | 4 | 19 | 9 | 3 | 3 | 5 | 0 | 5 | 8 | 6 | 7 | 4 | 1 | 3 | 9 | 6 | 1 | 4 | 2 | 6 | 1 | 9 |
| Spanish | 2 | 74 | 41 | 22 | 3 | 1 | 0 | 6 | 1 | 0 | 5 | 2 | 3 | 2 | 13 | 2 | 0 | 6 | 24 | 29 | 2 | 33 |
| Special Education | 3 | 7 | 13 | 22 | 38 | 8 | 0 | 47 | 1 | 13 | 12 | 1 | 2 | 0 | 46 | 1 | 0 | 9 | 25 | 79 | 0 | 27 |
| Speech | 0 | 1 | 5 | 2 | 2 | 4 | 0 | 2 | 1 | 3 | 0 | 1 | 0 | 2 | 1 | 0 | 0 | 0 | 2 | 11 | 0 | 8 |
| Swedish | 0 | 0 | 0 | 0 | 0 | 0 | 0 | 0 | 0 | 0 | 0 | 5 | 0 | 0 | 0 | 0 | 0 | 0 | 0 | 0 | 0 | 0 |
| Technology Education | 0 | 0 | 6 | 4 | 0 | 1 | 0 | 0 | 0 | 0 | 0 | 0 | 0 | 0 | 0 | 0 | 0 | 0 | 0 | 5 | 0 | 0 |
| Traffic Safety | 0 | 0 | 23 | 1 | 0 | 1 | 0 | 0 | 0 | 1 | 0 | 0 | 1 | 0 | 0 | 0 | 0 | 0 | 0 | 1 | 0 | 0 |
| Turkish | 0 | 0 | 0 | 0 | 0 | 0 | 0 | 0 | 0 | 2 | 0 | 0 | 0 | 0 | 0 | 0 | 0 | 0 | 0 | 0 | 0 | 0 |

Endorsements on Limited Certificates

Conditional certificates are issued to individuals who do not meet all qualifications for a regular certificate and who are certificated for a limited assignment in a specific school or school district. The requesting agency must verify that no person with regular certification in the field is available. Endorsements on conditional certificates issued in 1999–99 are listed in Table G.

Table G. Endorsements on Conditional Certificates 1999-2000

| | | | |
|------------------------------|----|--|----|
| American Sign Language | 2 | ROTC Instructor | 11 |
| Art | 5 | Russian | 1 |
| Biology | 1 | School Nurse | 6 |
| Chemistry | 1 | School Speech Language Pathologist or Audiologist | 6 |
| Choral Music | 3 | Science | 2 |
| Dance | 10 | Spanish | 5 |
| Drama | 1 | Special Education | 1 |
| Early Childhood Education | 1 | Student Advisor | 9 |
| Elementary Education | 3 | Technology Education | 3 |
| English as a Second Language | 2 | Tennis Coach | 1 |
| French | 1 | Track Coach | 1 |
| German | 1 | Traffic Safety | 9 |
| Instructional Technology | 1 | On-Street Instruction Only* | 73 |
| Japanese | 6 | Simulation Only** | 5 |
| Latin | 1 | Vietnamese | 1 |
| Learning Resources | 2 | Volleyball Coach | 1 |
| Mathematics | 5 | Wrestling Coach | 1 |
| Music | 4 | | |
| Physical Education | 1 | | |

* On-Street Instruction Only permits individuals to instruct driver education students behind the wheel, but not to teach the class.

** Simulation Only permits individuals to instruct driver education students using a simulator, but not to teach the class.

Endorsements on emergency certificates issued in 1999–2000 are listed in Table H. Educational service districts, school districts, or private schools may recommend that an emergency certificate be issued to individuals who hold the appropriate degree and have substantially completed a preparation program, provided that a qualified person

who holds regular certification is not available. Rules governing the emergency certificate are found in WAC 180-79A-231(3).

Table H. Endorsements on Emergency Certificates 1999-2000

| | |
|--------------------------------------|----|
| Emergency Teacher Certificates | |
| Bilingual Education | 3 |
| Business Education | 1 |
| Mathematics | 3 |
| Physical Education | 1 |
| Science | 5 |
| Social Studies | 1 |
| Special Education | 1 |
| Emergency ESA Certificates | |
| School Counselor | 10 |
| School Psychologist | 15 |
| School Social Worker | 4 |
| Emergency Administrator Certificates | |
| Principal | 3 |

Vocational Certificates

Applicants for vocational certification are certificated in the broad areas of Agricultural Education, Business Education, Marketing Education, Family and Consumer Sciences Education, and Technology Education, and/or specialty areas. Table I reflects the number of Initial, Initial Renewal, Continuing, Probationary and Conditional certificates issued (new and renewed) in these areas. For the purpose of this chart, some specialty areas have been grouped under school district program areas. Detailed information regarding the specialty areas is available upon request from the Professional Education and Certification office.

Table I. Vocational Certificates Issued, July 1, 1999 - June 30, 2000

| | <u>New</u> | <u>Renewal</u> | <u>Total</u> |
|--|------------|----------------|--------------|
| Vocational Director and Assistant Director | 20 | 29 | 49 |
| Agriculture Education* | 24 | 37 | 61 |
| Agriculture Specialty Areas | 28 | 3 | 31 |
| Business Education* | 106 | 145 | 251 |
| Business Specialty Areas | 63 | 15 | 78 |
| Marketing Education* | 36 | 42 | 78 |
| Marketing Specialty Areas | 28 | 2 | 30 |
| Family and Consumer Sciences Education* | 55 | 99 | 154 |
| Family and Consumer Sciences Education (Specialty Areas) | 9 | 16 | 25 |
| Technology Education (all areas, degree required) | 35 | 68 | 103 |
| Health Occupations (all specialty areas) | 60 | 10 | 70 |
| Trade and Industrial (all specialty areas) | 203 | 100 | 303 |
| Diversified Occupations | 94 | 63 | 157 |
| Vocational Counselor | 10 | 23 | 33 |
| Occupational Information Specialist | 12 | 21 | 33 |
| Work-Based Learning Coordinator | 132 | 110 | 242 |
| <i>Totals</i> | <u>915</u> | <u>783</u> | <u>1698</u> |

** Usually based on a degree program. However, significant numbers of these certificates are conditional certificates (which do not require a degree program)*

Certificates Issued to Out-of-State Candidates

When a candidate from another state receives a Washington certificate, the state in which the most recent educational service occurred is designated as the entry state. If the candidate has not been in educational service, the state listed is the state where the most recent education program was completed.

During 1999–2000, two states (California and Oregon) accounted for approximately 28 percent of the out-of-state recipients of Washington State teaching certificates. California, Oregon, Idaho, Montana, and Texas are the top five states-of-origin for out-of-state applicants.

Table J. Top Ten States From Which Out-of-State Candidates Entered Washington, 1999-2000

| <u>Teacher</u> | | <u>Administrator</u> | | <u>Educational Staff Associate</u> | |
|----------------|-----|----------------------|----|------------------------------------|----|
| California | 479 | Oregon | 24 | California | 17 |
| Oregon | 405 | Arizona | 15 | Idaho | 16 |
| Idaho | 200 | California | 12 | Oregon | 15 |
| Montana | 155 | Montana | 7 | Montana | 8 |
| Texas | 147 | Idaho | 6 | Illinois | 7 |
| New York | 114 | Alaska | 5 | Florida | 7 |
| Arizona | 109 | Nevada | 4 | New York | 6 |
| Illinois | 89 | Colorado | 3 | Texas | 5 |
| Colorado | 87 | Florida | 3 | Georgia | 5 |
| Utah | 76 | New York | 3 | Utah | 4 |

Two hundred and fourteen teaching certificates were also issued to applicants whose most recent educational experience or education programs were completed in foreign countries.

PART II
CERTIFICATED PERSONNEL PLACEMENT STATISTICS
1999-2000

PART II - CERTIFICATED PERSONNEL PLACEMENT STATISTICS, 1999-2000

Introduction

Each year Washington State colleges and universities prepare reports for the Superintendent of Public Instruction detailing certification and placement information. Certification and placement data collected and reported in this 1999–2000 report are for persons completing teacher education programs during the previous year (1998–99).

Program Completion Data

There were 3,289 new teachers completing certification programs at Washington State colleges and universities during 1998–99. Figure 2 depicts those completing programs over a 28-year period, showing a dramatic and steady decline from 5,685 in 1972 to 2,007 in 1985, followed by a rise to a high of 3,303 in 1998. The years after 1986 showed a generally increasing trend.

Figure 2. Trends in Teacher Certification in Washington, 1972-1999

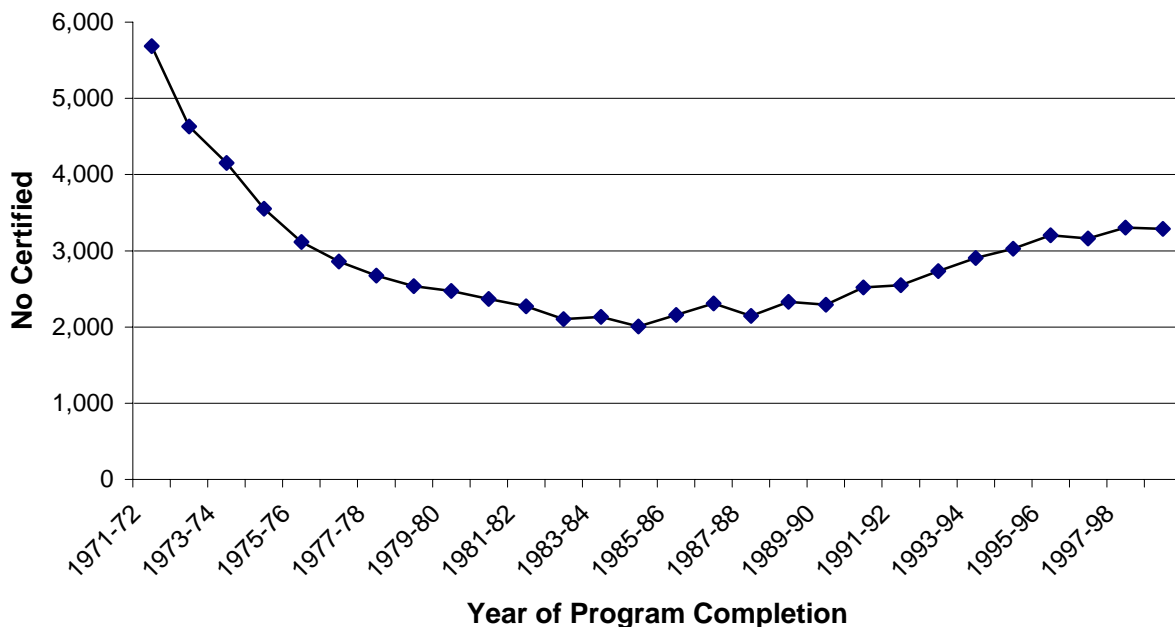


Figure 2 was derived from Table K below, which provides specific totals for certificates granted and the percent change year by year.

Table K. Number Completing Teacher Education Programs, 1972-1999

| <u>Year</u> | <u>Number Completing Programs</u> | <u>Percentage Change from Previous Year</u> |
|-------------|-----------------------------------|---|
| 1971-72 | 5,685 | |
| 1972-73 | 4,631 | -18.5 |
| 1973-74 | 4,151 | -10.4 |
| 1974-75 | 3,554 | -14.4 |
| 1975-76 | 3,114 | -12.4 |
| 1976-77 | 2,858 | - 8.2 |
| 1977-78 | 2,675 | - 6.4 |
| 1978-79 | 2,537 | - 5.2 |
| 1979-80 | 2,472 | - 2.6 |
| 1980-81 | 2,367 | - 4.2 |
| 1981-82 | 2,270 | - 4.1 |
| 1982-83 | 2,105 | - 7.2 |
| 1983-84 | 2,133 | + 1.3 |
| 1984-85 | 2,007 | - 5.9 |
| 1985-86 | 2,158 | + 7.5 |
| 1986-87 | 2,308 | + 7.0 |
| 1987-88 | 2,146 | - 7.0 |
| 1988-89 | 2,332 | + 8.8 |
| 1989-90 | 2,294 | - 1.7 |
| 1990-91 | 2,519 | + 9.8 |
| 1991-92 | 2,549 | + 1.2 |
| 1992-93 | 2,732 | + 7.2 |
| 1993-94 | 2,907 | + 6.5 |
| 1994-95 | 3,028 | + 4.2 |
| 1995-96 | 3,204 | + 5.8 |
| 1996-97 | 3,160 | - 1.4 |
| 1997-98 | 3,303 | + 4.5 |
| 1998-99 | 3,289 | - 0.004 |

Placement Statistics

Figure 3 provides a quick overview of employment for the 3,289 people who completed teacher education programs in 1998–99. The data were collected in a voluntary survey with a response rate of 92.2 percent. Sixty three percent reported holding teaching contracts. If one also considers substitute teaching, 82 percent were employed in full- or part-time teaching positions. The 6 percent who are "other" include a variety of categories—people working in classified positions in schools, the unemployed, and those in graduate study.

Figure 3. First-Year Employment, 1998-99 Program Completers

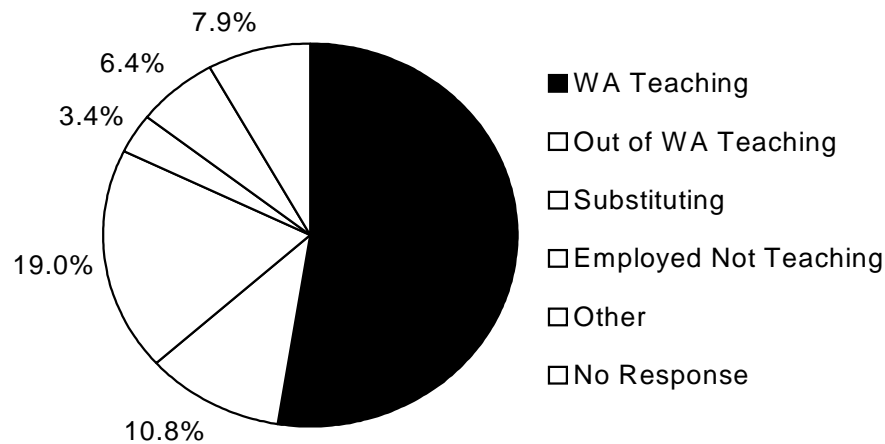


Table L below expands the quick view provided by the "pie" graph in Figure 3 and provides some historical perspective. It contains categorical placement data for the year after program completion for those who completed initial teacher training in 1996–97, 1997–98, and 1998-1999. The percentage for each category is based on the total number of people certificated rather than the number of respondents.

Table L. Three-Year Placement Statistics

| Part 1. Summary: | | Placed in year: | | | | |
|--|------------------|------------------|------------------|------------------|------------------|--------------|
| | | <u>1997-1998</u> | <u>1998-1999</u> | <u>1999-2000</u> | | |
| Total Number of Respondents | | 2,986 (94.5%) | 3,173 (96.1%) | 3,037 (92.3%) | | |
| Total Number Unable to Contact | | 174 (5.5%) | 130 (3.9%) | 258 (7.8%) | | |
| Total Surveyed | | 3,160 (100%) | 3,303 (100%) | 3,289 (100%) | | |
| Part 2. Population Report by Category: | | | | | | |
| <u>Category</u> | Respondents | % of | Respondents | % of | Respondents | % of |
| | <u>1997-1998</u> | <u>Total</u> | <u>1998-1999</u> | <u>Total</u> | <u>1999-2000</u> | <u>Total</u> |
| 1. Employed as teacher in state | 1495 | 47% | 1616 | 49% | 1704 | 52% |
| <i>public</i> | 1360 | 43% | 1476 | 45% | 1576 | 48% |
| <i>private</i> | 135 | 4% | 140 | 4% | 128 | 4% |
| 2. Employed as teacher out of state | 299 | 10% | 321 | 10% | 352 | 11% |
| <i>public</i> | 239 | 8% | 273 | 9% | 292 | 9% |
| <i>private</i> | 60 | 2% | 48 | 1% | 60 | 2% |
| 3. Employed as substitute teacher | 832 | 26% | 841 | 25% | 619 | 19% |
| 4. Employed position in non-certified position (e.g. paraeducator) | 40 | 1% | 31 | 1% | 20 | 1% |
| 5. Employed, nonteaching | 90 | 3% | 89 | 3% | 89 | 3% |
| 6. Employed, non-teaching, seeking teaching | 46 | 1% | 45 | 1% | 44 | 1% |
| 7. Unemployed, seeking teaching | 22 | 1% | 27 | 1% | 26 | 1% |
| 8. Unemployed, seeking non-teaching position | 2 | 0% | 3 | 0% | 71 | 2% |
| 9. Not seeking any employment | 87 | 3% | 105 | 3% | 31 | 1% |
| 10. Primarily in grad study | 47 | 1% | 56 | 2% | 38 | 1% |
| 11. Other | 26 | 1% | 39 | 1% | 43 | 1% |

¹ Total includes both respondents and nonrespondents. The 7.8 percent nonrespondents must be included for percentages to total 100 percent.

The numbers and percentages of persons completing teacher education programs in Washington colleges and universities during 1998–99 is presented in Table M. The overall placement rate (63 percent in 1999–2000) represents an increase for the fourth consecutive year. The percentage of full-time placements varied widely from institution to institution, ranging from 44 percent to 89 percent. Those institutions reporting the highest placement rates were Seattle University, University of Puget Sound, The Evergreen State College, Pacific Lutheran University, University of Washington at Tacoma, and Whitworth College; all reported over 70 percent of graduates teaching during the first year after program completion.

Table M. Number and Percentage of Placements by Institution¹

| <u>College</u> | <u>Total Cert</u> | <u># of Resp</u> | <u>WA Tchg</u> | <u>Non-WA</u> | | <u>Total Tchg</u> | <u>% Teaching</u> |
|----------------|-------------------|------------------|----------------|---------------|-------------|-------------------|-------------------|
| | | | | <u>Tchg</u> | | | |
| Antioch | 16 | 14 | 7 | 0 | 7 | 44% | |
| Central | 563 | 449 | 240 | 49 | 289 | 51% | |
| City | 164 | 164 | 86 | 18 | 104 | 63% | |
| Eastern | 380 | 380 | 136 | 52 | 188 | 49% | |
| Gonzaga | 77 | 72 | 25 | 18 | 43 | 56% | |
| Heritage | 95 | 71 | 49 | 1 | 50 | 53% | |
| Northwest | 40 | 40 | 22 | 5 | 27 | 68% | |
| PLU | 182 | 182 | 124 | 13 | 137 | 75% | |
| Pacific Oaks | 36 | 36 | 23 | 2 | 25 | 69% | |
| Saint Martin's | 133 | 126 | 78 | 8 | 86 | 65% | |
| SPU | 118 | 107 | 64 | 8 | 72 | 61% | |
| Seattle U | 91 | 91 | 77 | 4 | 81 | 89% | |
| TESC | 34 | 34 | 20 | 6 | 26 | 76% | |
| UPS | 60 | 59 | 49 | 3 | 52 | 87% | |
| UW Bothell | 27 | 27 | 13 | 0 | 13 | 48% | |
| UW Seattle | 93 | 64 | 46 | 8 | 54 | 58% | |
| UW Tacoma | 51 | 50 | 36 | 0 | 36 | 71% | |
| WallaWalla | 43 | 39 | 12 | 17 | 29 | 67% | |
| WSU | 370 | 345 | 209 | 41 | 250 | 68% | |
| Western | 565 | 530 | 335 | 48 | 383 | 68% | |
| Whitman | 12 | 12 | 1 | 5 | 6 | 50% | |
| Whitworth | 139 | 139 | 52 | 46 | 98 | 71% | |
| <i>Totals</i> | <i>3289</i> | <i>3031</i> | <i>1704</i> | <i>352</i> | <i>2056</i> | <i>63%</i> | |

¹ As reported by the individual higher education institution.

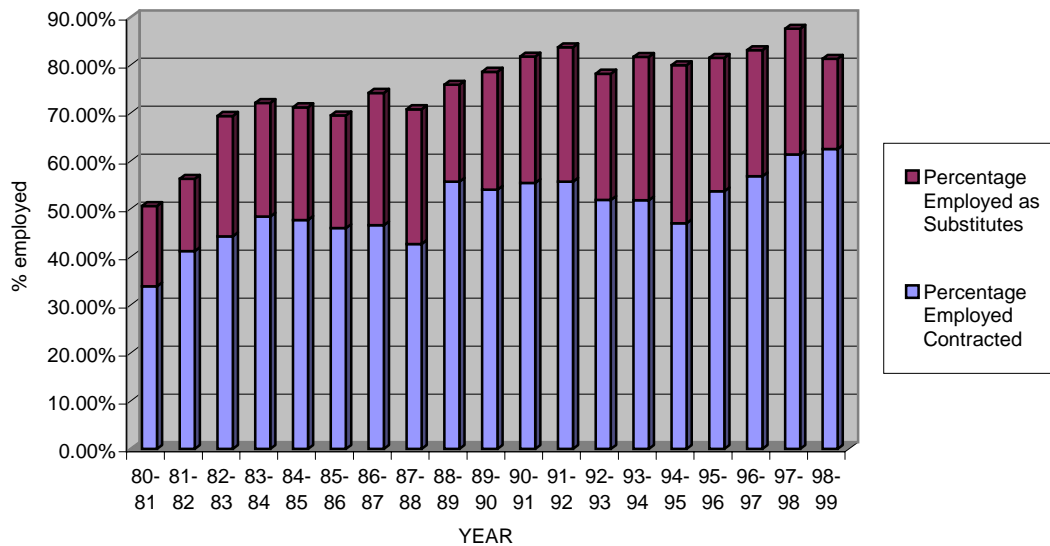
Table N provides historical perspective given Table M's current year data. It depicts the percentage of persons completing preparation programs from 1980–81 through 1998–99 and their employment status the year after program completion. Also, it shows the percentage of persons employed as substitutes. The 1999–2000 increase continues a trend of higher placement rates. The percentage of persons employed or contracted from 1980–81 until the present has risen from 33.9 percent in 1980–81 to the high of over 62 percent in this survey. The percentage of persons employed as substitutes generally increased from 16.7 percent in 1980–81 to a high of 33 percent in 1994-95, and dropped to 18.8 percent last year.

Table N. Percentage of Persons Employed

| <u>Reporting Year</u> | <u>Year of Program Completion</u> | <u>Percentage Employed or Contracted</u> | <u>Percentage Employed as Substitutes</u> | <u>Total Employed in Teaching</u> |
|-----------------------|-----------------------------------|--|---|-----------------------------------|
| 81–82 | 80–81 | 33.9% | 16.7% | 50.60% |
| 82–83 | 81–82 | 41.2% | 15.1% | 56.30% |
| 83–84 | 82–83 | 44.3% | 25.1% | 69.40% |
| 84–85 | 83–84 | 48.4% | 23.7% | 72.10% |
| 85–86 | 84–85 | 47.7% | 23.5% | 71.20% |
| 86–87 | 85–86 | 46.0% | 23.4% | 69.40% |
| 87–88 | 86–87 | 46.6% | 27.6% | 74.20% |
| 88–89 | 87–88 | 42.7% | 28.1% | 70.80% |
| 89–90 | 88–89 | 55.7% | 20.2% | 75.90% |
| 90–91 | 89–90 | 54.0% | 24.6% | 78.60% |
| 91–92 | 90–91 | 55.4% | 26.4% | 81.80% |
| 92–93 | 91–92 | 55.7% | 28.0% | 83.70% |
| 93–94 | 92–93 | 51.9% | 26.3% | 78.20% |
| 94–95 | 93–94 | 51.8% | 29.9% | 81.70% |
| 95–96 | 94–95 | 47.0% | 33.0% | 80.00% |
| 96–97 | 95–96 | 53.7% | 27.8% | 81.50% |
| 97–98 | 96–97 | 56.8% | 26.3% | 83.10% |
| 98–99 | 97–98 | 58.6% | 25.5% | 84.10% |
| 1999-2000 | 98–99 | 62.5% | 18.8% | 81.30% |

Figure 4 presents the data in Table N visually, showing that the percentage of newly certificated teachers placed both full-time and as substitutes has leveled off during the 1990's at about 80 percent. The graph gives some perspective on the increase in full-time placements of teachers certificated in 1998–99.

Figure 4. Percentage of Newly Certificated Teachers Employed



Endorsement Statistics

An endorsement on a teaching certificate indicates the grade level and subject area(s) in which the certificate holder may teach. While an applicant need qualify for only one endorsement for the initial certificate, many qualify for multiple endorsements. The 3,031 persons completing initial teacher certification programs in 1998–99 who responded to the survey completed 5,983 endorsements or, on average, slightly under two endorsements per person. Table O lists the endorsements held by individuals who were successful in securing contracted teaching positions—regardless of the endorsement area in which they were employed. All endorsements for each person are reported. For example, a teacher who has both art and history endorsements and

accepts a position would be reported as hired for both endorsements. Although Table O provides some data about comparative demand for endorsements, a much clearer picture appears in Table P where only employment in the endorsement area is tabulated. Here, a teacher who has both art and history endorsements and accepts a position in art is listed as employed only in art. Less duplication in counting individuals occurs, but it still occurs if the person teaches in two areas.

Table O. Rank Order of Endorsement Areas by Percentages of Persons Employed in Schools, 1999-2000

| <u>Endorsement Area</u> | <u>Endorsements Reported</u> | <u>Number Employed in School Districts</u> | <u>Percentage Employed in School Districts</u> |
|-----------------------------------|------------------------------|--|--|
| Computer Science | 1 | 1 | 100.0% |
| Chemistry | 58 | 49 | 84.5% |
| Journalism | 17 | 14 | 82.4% |
| Special Education | 347 | 279 | 80.4% |
| Science | 85 | 68 | 80.0% |
| Bilingual Education | 20 | 15 | 75.0% |
| Earth Science | 36 | 27 | 75.0% |
| Speech | 28 | 21 | 75.0% |
| Foreign Languages | 212 | 157 | 74.1% |
| English-as-a-2d Language | 119 | 87 | 73.1% |
| Business Education | 46 | 33 | 71.7% |
| Mathematics | 141 | 100 | 70.9% |
| Physics | 20 | 14 | 70.0% |
| Biology | 158 | 110 | 69.6% |
| Music | 64 | 44 | 68.8% |
| English | 407 | 277 | 68.1% |
| Eng/Language Arts | 72 | 49 | 68.1% |
| Political Science | 56 | 38 | 67.9% |
| Choral Music | 58 | 39 | 67.2% |
| Psychology | 238 | 160 | 67.2% |
| Early Childhood Special Education | 24 | 16 | 66.7% |
| Instrumental Music | 51 | 34 | 66.7% |
| Elementary Education | 1974 | 1298 | 65.8% |
| Family & Consumer Sciences Educ | 43 | 28 | 65.1% |
| Marketing Education | 25 | 16 | 64.0% |
| Anthropology | 32 | 20 | 62.5% |
| Philosophy | 8 | 5 | 62.5% |
| History | 353 | 219 | 62.0% |

| <u>Endorsement Area</u> | <u>Endorsements Reported</u> | <u>Number Employed in School Districts</u> | <u>Percentage Employed in School Districts</u> |
|---------------------------|------------------------------|--|--|
| Social Studies | 240 | 148 | 61.7% |
| Sociology | 86 | 53 | 61.6% |
| Technology Education | 26 | 16 | 61.5% |
| Health | 92 | 56 | 60.9% |
| Early Childhood Education | 268 | 163 | 60.8% |
| Agriculture | 20 | 12 | 60.0% |
| Physical Education | 139 | 82 | 59.0% |
| Economics | 30 | 17 | 56.7% |
| Geography | 16 | 9 | 56.3% |
| Reading | 231 | 129 | 55.8% |
| Traffic Safety | 17 | 9 | 52.9% |
| Art | 78 | 40 | 51.3% |
| Learning Resources | 8 | 4 | 50.0% |
| Drama | 38 | 18 | 47.4% |
| Religion | 1 | 0 | 0.0% |
| Totals | 5983 | 3974 | 66.4% |

Table P. Rank Order of Endorsement Areas by Percentages of Persons Employed in the Endorsement Area, 1999-2000

| <u>Endorsement Area</u> | <u>Endorsements Reported</u> | <u>Number Employed Within Endorsement</u> | <u>Percentage Employed Within Endorsement</u> |
|---------------------------------|------------------------------|---|---|
| Computer Science | 1 | 1 | 100.0% |
| Family & Consumer Sciences Educ | 43 | 26 | 60.5% |
| Agriculture | 20 | 12 | 60.0% |
| Mathematics | 141 | 80 | 56.7% |
| Business Education | 46 | 25 | 54.3% |
| Science | 85 | 42 | 49.4% |
| Elementary Education | 1974 | 972 | 49.2% |
| Health | 92 | 41 | 44.6% |
| Special Education | 347 | 147 | 42.4% |
| Physical Education | 139 | 56 | 40.3% |
| Music | 64 | 25 | 39.1% |
| English | 407 | 158 | 38.8% |
| Chemistry | 58 | 19 | 32.8% |
| Biology | 158 | 44 | 27.8% |
| Instrumental Music | 51 | 14 | 27.5% |
| Technology Education | 26 | 7 | 26.9% |
| Social Studies | 240 | 64 | 26.7% |
| Bilingual Education | 20 | 5 | 25.0% |
| Learning Resources | 8 | 2 | 25.0% |
| English/Language Arts | 72 | 17 | 23.6% |

| <u>Endorsement Area</u> | <u>Endorsements Reported</u> | <u>Number Employed</u> | |
|----------------------------|------------------------------|---------------------------|---|
| | | <u>Within Endorsement</u> | <u>Percentage Employed Within Endorsement</u> |
| Journalism | 17 | 4 | 23.5% |
| Early Childhood Education | 268 | 60 | 22.4% |
| Art | 78 | 17 | 21.8% |
| Foreign Languages | 212 | 45 | 21.2% |
| Drama | 38 | 8 | 21.1% |
| Physics | 20 | 4 | 20.0% |
| History | 353 | 57 | 16.1% |
| Earth Science | 36 | 5 | 13.9% |
| English-as-a-2d Language | 119 | 16 | 13.4% |
| Philosophy | 8 | 1 | 12.5% |
| Anthropology | 32 | 3 | 9.4% |
| Choral Music | 58 | 5 | 8.6% |
| Reading | 231 | 19 | 8.2% |
| Geography | 16 | 1 | 6.3% |
| Traffic Safety | 17 | 1 | 5.9% |
| Political Science | 56 | 3 | 5.4% |
| Early Childhood Special Ed | 24 | 1 | 4.2% |
| Marketing Education | 25 | 1 | 4.0% |
| Speech | 28 | 1 | 3.6% |
| Psychology | 238 | 2 | 0.8% |
| Economics | 30 | 0 | 0.0% |
| Religion | 1 | 0 | 0.0% |
| Sociology | 86 | 0 | 0.0% |
| Totals | 5983 | 2011 | 33.6% |

Placement Statistics by Racial/Ethnic Group

Sixty Asians, 49 African Americans, 71 Hispanics, and 13 Native Americans who earned certificates through Washington institutions in 1998–99 were employed as teachers. Based on the available data, 518 minorities (including "other") earned initial teaching certificates in Washington during 1998–99. Of these, 344 or 66.4 percent were employed as teachers, compared to 67.4 percent for the state's newly certificated teachers as a whole. Table Q presents detailed information on new teacher certification and employment by sex and race for those who completed programs in 1998–1999.

Table Q. Contracted and Substitute Employment by Racial/Ethnic Group of Persons Certificated in 1999-2000

| Asians | | Black | | Caucasian | | Hispanic | | Native American | | Other | | Total |
|--|----|-------|----|-----------|------|----------|----|-----------------|----|-------|-----|-------|
| M | F | M | F | M | F | M | F | M | F | M | F | |
| Category 1 – Employed as a teacher in the state: | | | | | | | | | | | | |
| 13 | 34 | 19 | 27 | 318 | 1015 | 18 | 46 | 2 | 7 | 33 | 90 | 1622 |
| Category 2 – Employed as a teacher out of state: | | | | | | | | | | | | |
| 1 | 12 | 2 | 1 | 81 | 216 | 3 | 4 | 2 | 4 | 15 | 11 | 352 |
| Category 3 – Employed as a Substitute teacher: | | | | | | | | | | | | |
| 7 | 3 | 2 | 2 | 118 | 381 | 2 | 8 | 2 | 8 | 24 | 32 | 589 |
| Categories 4-12 – Nonteaching: | | | | | | | | | | | | |
| 4 | 8 | 1 | 4 | 68 | 213 | 18 | 8 | 1 | 4 | 14 | 22 | 365 |
| Totals: | | | | | | | | | | | | |
| 25 | 57 | 24 | 34 | 585 | 1825 | 41 | 66 | 7 | 23 | 86 | 155 | 2928 |

In 1995–1996 and 1998-1999, the proportion of minorities receiving teaching certificates in Washington increased markedly. Table R provides numerical data on a generally positive trend for the period 1988 through 1999.

Table R. Trends in Teacher Certification of Minority Group Members

| | 87-88 | 88-89 | 89-90 | 90-91 | 91-92 | 92-93 | 93-94 | 94-95 | 95-96 | 96-97 | 97-98 | 98-99 |
|-----------------------|-----------|-----------|-----------|------------|------------|------------|------------|------------|------------|------------|------------|------------|
| Asian | 20 | 25 | 29 | 30 | 30 | 41 | 48 | 64 | 102 | <u>66</u> | 110 | <u>82</u> |
| African American | 3 | 9 | 17 | 18 | 18 | 20 | <u>19</u> | 42 | 75 | <u>34</u> | 46 | 58 |
| Hispanic | 10 | 12 | 27 | 41 | 41 | 44 | 58 | <u>49</u> | <u>44</u> | 77 | 85 | 107 |
| Native American | 6 | 9 | <u>7</u> | 14 | 23 | 26 | 31 | <u>23</u> | 44 | 48 | <u>39</u> | <u>30</u> |
| Total Minority | 39 | 55 | 80 | 103 | 112 | 131 | 156 | 178 | 299 | 330 | 356 | 518 |
| % Increase | | 41% | 45% | 29% | 9% | 17% | 19% | 14% | 68% | 10.4% | 7.9% | 45.5% |

Underlined numbers indicate a decrease from the previous year.

Figure 5 presents the minority percentage of total certificates issued, indicating that the total number of minority group members certified annually has risen ten-fold from 1.8 percent of the total number certified in 1987–88 to 18 percent in 1998–99.

Figure 5. Percentage of Certificates Earned by Minority Group Members

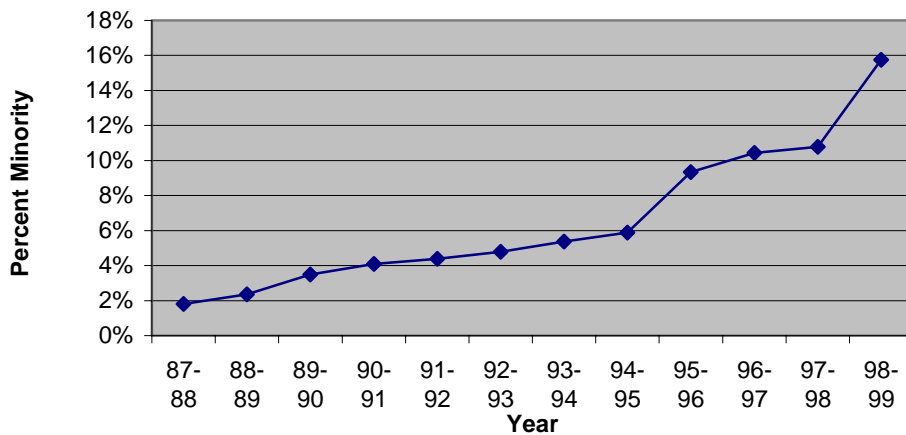


Figure 6 shows the proportion of certificates awarded to specific minority groups annually. The four-year period 95-96, 96-97, 97-98, and 99-00 represents a significant sustained increase from previous years.

Figure 6. Proportion of Specific Minority Group Members Certificated

