



## Readiness to Learn Program Sites 2003-04



Burien	Olympia	Spokane County
Cowlitz County	Pierce County	Vancouver
Grays Harbor	Port Angeles	Vashon Island
Hood Canal	Quillayute Valley	Wahkiakum
Kitsap County	Renton	Wenatchee
Manson	San Juan County	Whatcom County
North King	Skagit County	White Pass
Okanogan	South Whidbey	Yakima Valley

### The Office of Superintendent of Public Instruction

#### Need more information?

To learn more about the Readiness to Learn program, contact Ron Hertel, by phone at (360) 725-6049 or by email at [RHertel@ospi.wednet.edu](mailto:RHertel@ospi.wednet.edu).

Detailed findings are available upon request.



Office of Superintendent of  
Public Instruction  
PO BOX 47200  
Olympia, WA 98504-7200  
[www.k12.wa.us](http://www.k12.wa.us)

# Washington State

**Readiness to Learn**  
2003-04 School Year



Through **Readiness to Learn (RTL)**, there are currently **106 school districts and 350 school buildings** across Washington that link with other public and community resources in an effort to provide support to at-risk students and families. It is a means to meet basic needs and help create an environment that supports educational achievement. Program outcomes point to the benefits RTL collaboration has made. Poor health, chaos at home, and/or living in an unsafe environment negatively impact a child's academic achievement. Educators often feel ill-equipped to deal with the complex social and economic problems students face which often become barriers to learning. RTL works with school administrators and educators to deal with those issues.

## Strengthening Linkages for Student Success

### The Origin

The **Readiness to Learn (RTL)** Program, administered by the Office of Superintendent of Public Instruction, was authorized by the Education Reform Act during the 1993 session of the Washington State Legislature.

### The Goal: Help Students...

- **Live** in a safe, healthy, civil environment.
- **Achieve** their highest learning potential.
- **Become** productive community members.

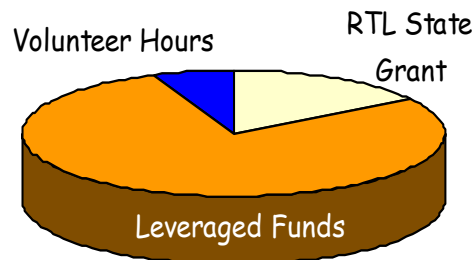
### The Program

RTL consortia are public and private agencies, businesses, and individuals that work together to reduce barriers to learning. Each consortium is required to have active partnerships with local offices representing the Department of Health, Employment Security, the Department of Social and Health Services, the Department of Community Trade and Economic Development, and businesses along with other community agencies representing the local community. There are currently **24 consortia** and many of them work closely with the Family Policy Council Community Networks to meet the needs of students and families across Washington State. Consortia range from small and rural to large and urban. They also range from individual school districts to multi-district collaborations. Families are linked with available services and when gaps are identified, the community is engaged to develop additional resources. Promising and evidence-based practices are extensively utilized.

During the 2003-04 School Year, Readiness to Learn served **4,185 families** and **5,066 children**

## Leveraged Resources

Each consortium has secured significant private, federal, and/or other state funds to expand services. Additionally, they have utilized a large percentage of volunteer, in-kind services, and donations to support students and their families.



### 2003-04 School Year

RTL State Grant: **\$3.6 million**

Leveraged Funds: **\$17.65 million**

Volunteer Hours/Dollar Value: **\$1.37 million**

### Family Satisfaction

- 74% - Reported substantial satisfaction with services
- 67% - Reported their child improved in school after RTL
- 84% - Would recommend RTL to others

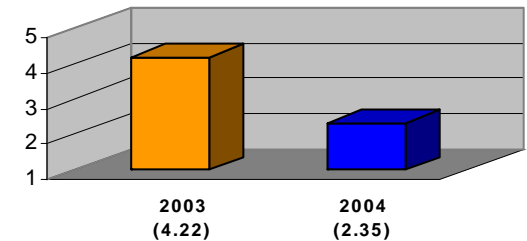
### Referrals for Services

- 5% - Preschool
- 62% - Grades Kindergarten-5
- 23% - Grades 6-12

## RTL Accomplishments

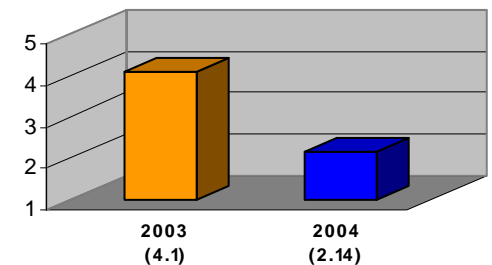
### Change In School Detentions

Average number of school detention days per student per quarter



### Change in School Suspensions

Average number of school suspension days per student per quarter



### Reflections

"The Readiness to Learn program has been very beneficial in helping our school-age children and their families improve student achievement."  
*-Superintendent, Eastern Washington*

"After missing 60 days of school and then not returning to school at all, the student is now attending nearly 95 % of the time." - *Teacher, Highline School District*

"You will never know how much RTL has helped my family!" - *Parent, South Whidbey*

"For the first time, I feel like I can do anything I put my mind to. If I could do this all over again, I'd do it in a heart beat." - *Student, Hood Canal*