



Meaningful Family Involvement

A Key to Successful RTI Outcomes



www.rti-info4families.org

1-800-5-PARENT

A Program of Washington PAVE



Funded by OSPI

Karen Blaine Program Coordinator,

coordinator@rti-info4families.org

1-509-928-1522

1-800-5-PARENT

A Program of Washington PAVE



Resources Available:



- RTI Toolkit for Families RTI
- RTI Workshops for Parents
- Conference Presentations
- Web-Page:

www.rti-info4families.org

- Newsletter articles for families



How many are teachers ?

How many of you are parents ?

How many of you are
teachers + parents ?





Reach for the Moon

by Samantha Abeel

- Born in Forks, Washington
- Became eligible for Special Education in 7th grade
- Became author of book of poetry



Have you ever
had to watch a
child struggle
until they
became eligible
for services?



What was it like for you?



Fact

or

Myth?



1. Myth - RTI is a



program in

Washington State



RTI is *not*

a *new* Program

But.....





Fact: RTI is...

Frame-work

For Problem-solving





RTI is

a coordinated way to
identify and provide
assistance to struggling
students





=



2. Myth – There is only one correct RTI model

Fact – There are several different models using different tiers

Fact – All RTI models typically share common elements



3. Myth – RTI is a Special Education initiative

Fact – RTI is general education-Title I-Special Education and any other education initiative working together with families



4. Myth: Parents are told about their right to request a Special Education evaluation after RTI interventions.

Fact: All Parents should be told evaluation is available at any time by written request



5. Myth Parents are not involved in the RTI process until their child is referred for special Education evaluation.

Fact - Parent involvement is a key component in RTI





What does research say?

When families, schools, and communities work together,

- Student achievement improves,
- Teacher morale rises,
- Communication among parents, teachers, and administrators increases,
- Family, school, and community connections multiply.

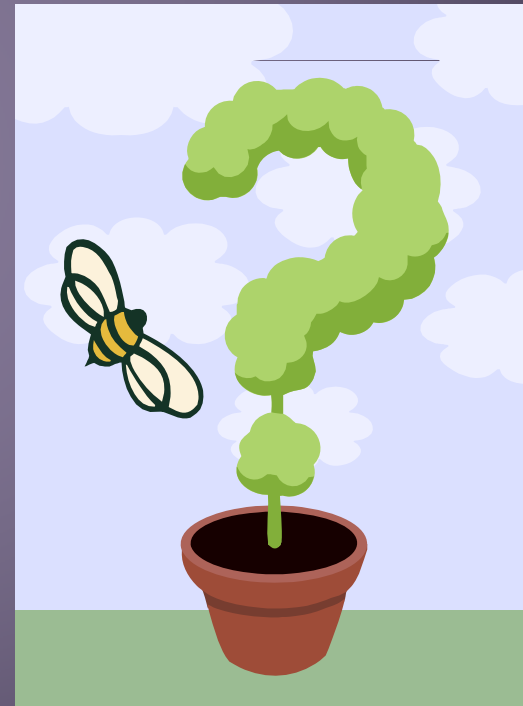
Family-School Partnerships

http://www.pta.org/family_school_partnerships.asp



One more team, one more
meeting

Why?



Have you been on a team that worked well together?



Teamwork



That didn't?

What helped you feel part of the team?

The Story



Helping Parents be Part of the Team

How do you involve parents?



When do you involve parents?



It is always the right time

to do the

Right thing!





Karen Blaine 509-922-3103



