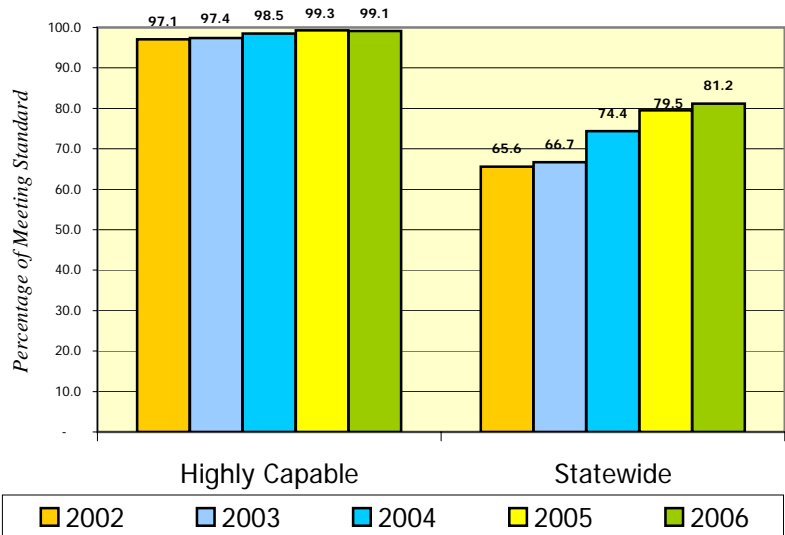


2002 – 06 WASL Trend Data

Fourth Grade: Highly Capable Students – Statewide

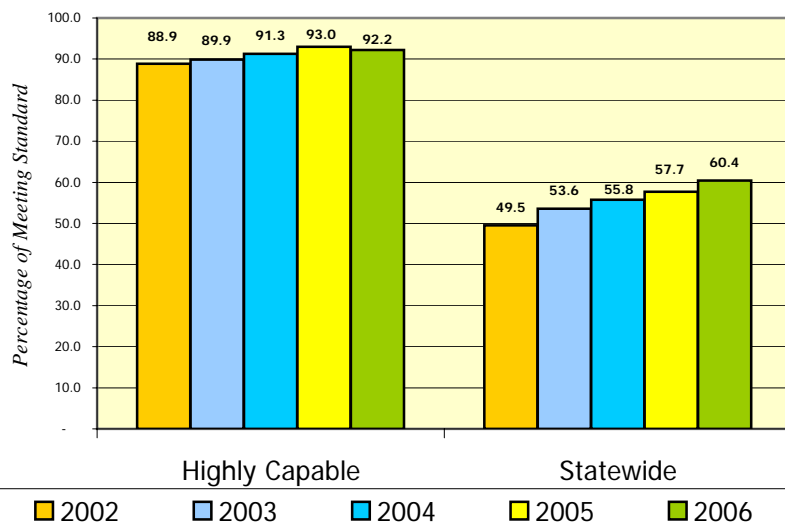
Reading

	HCP	State
2002	97.1	65.6
2003	97.4	66.7
% Change from 2002	0.3	1.1
2004	98.5	74.4
% Change from 2003	1.1	7.7
2005	99.3	79.5
% Change from 2004	0.8	5.1
2006	99.1	81.2
% Change from 2005	(0.2)	1.7
% Change from 2002	2.0	15.6



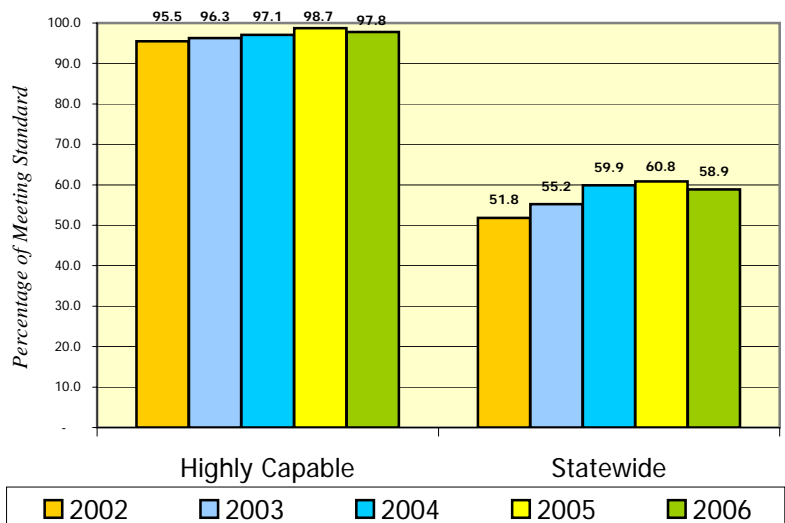
Writing

	HCP	State
2002	88.9	49.5
2003	89.9	53.6
% Change from 2002	1.0	4.1
2004	91.3	55.8
% Change from 2003	1.4	2.2
2005	93.0	57.7
% Change from 2004	1.7	1.9
2006	92.2	60.4
% Change from 2005	(0.8)	2.7
% Change from 2002	3.3	10.9



Mathematics

	HCP	State
2002	95.5	51.8
2003	96.3	55.2
% Change from 2002	0.8	3.4
2004	97.1	59.9
% Change from 2003	0.8	4.7
2005	98.7	60.8
% Change from 2004	1.6	0.9
2006	97.8	58.9
% Change from 2005	(0.9)	(1.9)
% Change from 2002	2.3	7.1

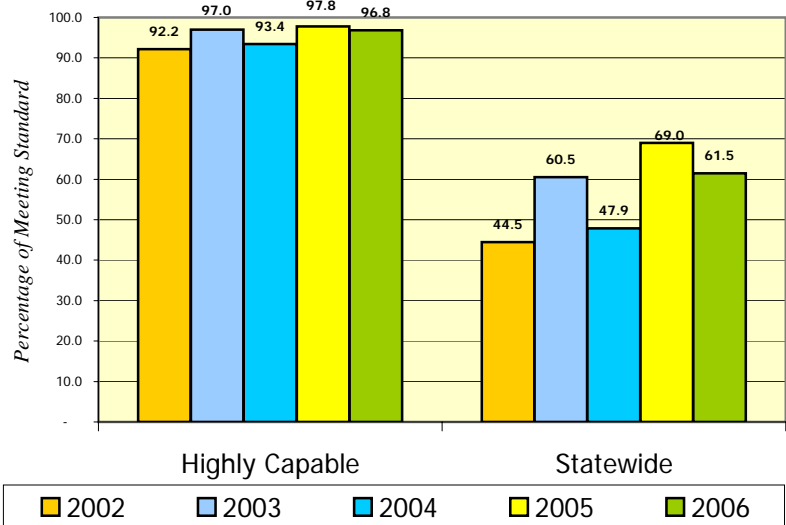


2002 – 06 WASL Trend Data

Seventh Grade: Highly Capable Students – Statewide

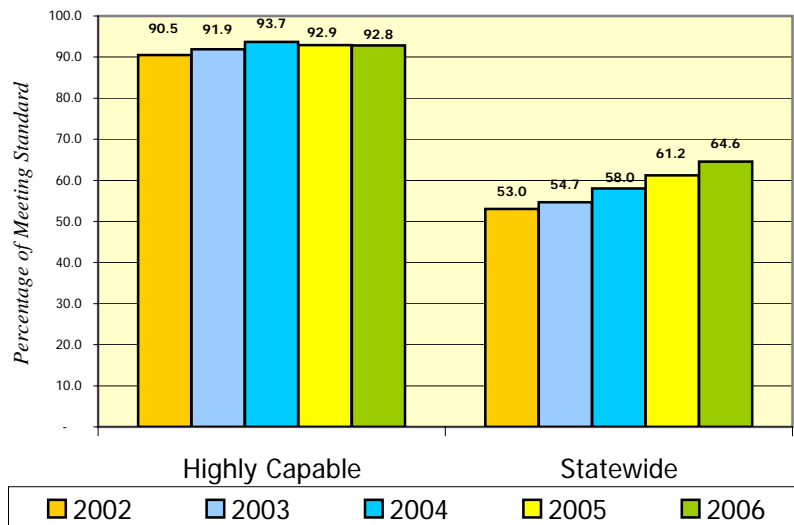
Reading

	HCP	State
2002	92.2	44.5
2003	97.0	60.5
% Change from 2002	4.8	16.0
2004	93.4	47.9
% Change from 2003	(3.6)	(12.6)
2005	97.8	69.0
% Change from 2004	4.4	21.1
2006	96.8	61.5
% Change from 2005	(1.0)	(7.5)
% Change from 2002	4.6	17.0



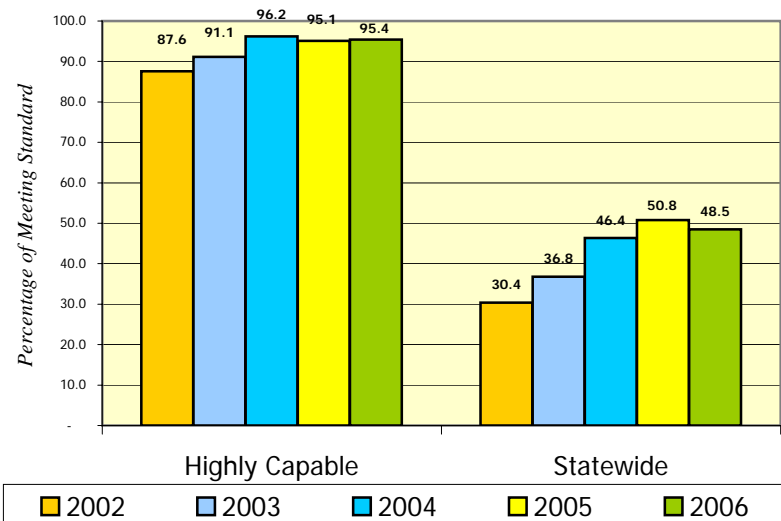
Writing

	HCP	State
2002	90.5	53.0
2003	91.9	54.7
% Change from 2002	1.4	1.7
2004	93.7	58.0
% Change from 2003	1.8	3.3
2005	92.9	61.2
% Change from 2004	(0.8)	3.2
2006	92.8	64.6
% Change from 2005	(0.1)	3.4
% Change from 2002	2.3	11.6



Mathematics

	HCP	State
2002	87.6	30.4
2003	91.1	36.8
% Change from 2002	3.5	6.4
2004	96.2	46.4
% Change from 2003	5.1	9.6
2005	95.1	50.8
% Change from 2004	(1.1)	4.4
2006	95.4	48.5
% Change from 2005	0.3	(2.3)
% Change from 2002	7.8	18.1

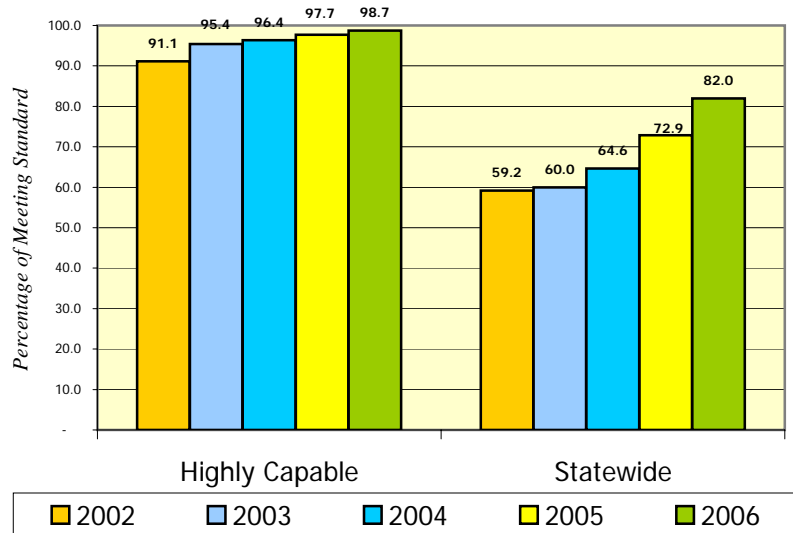


2002 – 06 WASL Trend Data

Tenth Grade: Highly Capable Students – Statewide

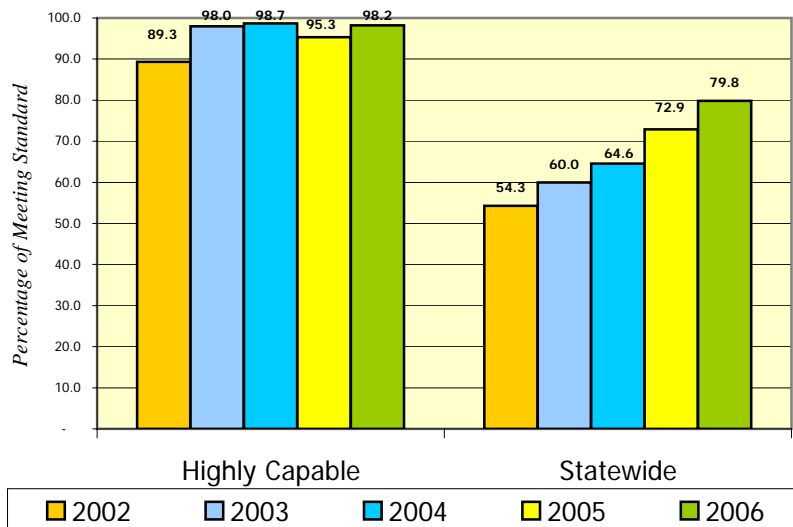
Reading

	HCP	State
2002	91.1	59.2
2003	95.4	60.0
% Change from 2002	4.3	0.8
2004	96.4	64.6
% Change from 2003	1.0	4.6
2005	97.7	72.9
% Change from 2004	1.3	8.3
2006	98.7	82.0
% Change from 2005	1.0	9.1
% Change from 2002	7.6	22.8



Writing

	HCP	State
2002	89.3	54.3
2003	98.0	60.0
% Change from 2002	8.7	5.7
2004	98.7	64.6
% Change from 2003	0.7	4.6
2005	95.3	72.9
% Change from 2004	(3.4)	8.3
2006	98.2	79.8
% Change from 2005	2.9	6.9
% Change from 2002	8.9	25.5



Mathematics

	HCP	State
2002	82.1	37.3
2003	87.6	39.4
% Change from 2002	5.5	2.1
2004	89.0	44.0
% Change from 2003	1.4	4.6
2005	90.9	47.5
% Change from 2004	1.9	3.5
2006	92.2	51.0
% Change from 2005	1.3	3.5
% Change from 2002	10.1	13.7

