



OPEN DOORS YOUTH REENGAGEMENT

# GRADUATION 101

Requirements, Waivers, and Pathways

**Brittni Thompson**

Program Supervisor for Secondary School  
Counseling, OSPI



Washington Office of Superintendent of  
**PUBLIC INSTRUCTION**





**Brittni Thompson**

Secondary School Counseling  
OSPI Program Supervisor



**Mandy Paradise**

Student Reengagement  
OSPI Program Supervisor

**Graduation 101**  
Requirements, Waivers,  
and Pathways



Washington Office of Superintendent of  
**PUBLIC INSTRUCTION**



## Broad

### Graduation 101

Requirements,  
Waivers, and  
Pathways

## Targeted

### *Graduation 201?*

Navigating grad  
requirements in Open  
Doors or ALE

## Specific

### Q&A

Email anytime with  
specific questions



# Open Doors is a targeted program

1

Older students  
(ages 16-21)

2

Unable to graduate  
with 4-year cohort/  
severely credit  
deficient

3

Are not enrolled or  
attending/ need  
reengaging



# Open Doors Youth Reengagement

**HS Diploma**

**GED Plus**

**Both**

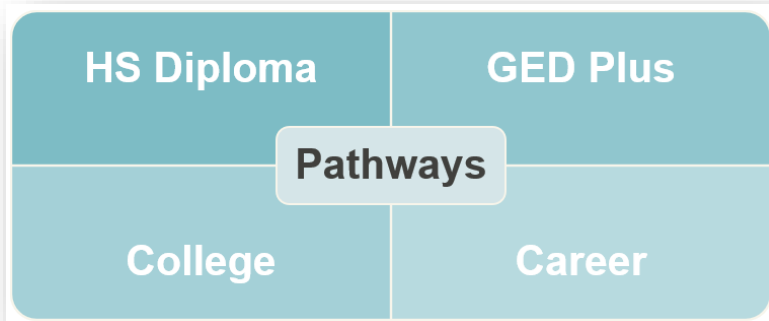
**College**

**Career**



# Defining “Pathway”

## Open Doors Youth Reengagement



## Graduation Pathways

### CLASS OF 2022 GRADUATION PATHWAYS

#### A Quick Reference Guide

##### Career/Technical Field = CTE Sequence

- Complete a sequence of 2.0 or more CTE credits that either includes a dual credit course or leads to an industry recognized credential
- Complete a Core Plus program

##### Military Career Interest – ASVAB Exam (AFQT Section only)

- Score for Class of 2022 = 31
- Check the [State Board of Education website](http://State Board of Education website) by September 1 annually for score update ([www.sbe.wa.gov/our-work/graduation-pathway-options/asvab](http://www.sbe.wa.gov/our-work/graduation-pathway-options/asvab))

##### Postsecondary Education = English Language Arts (ELA) and Math Courses and Exams (student must complete both an ELA and math option)

Students may use any combination of the ELA and math options listed in this section:

- ACT (ELA = 14 with Writing; math = 16)
- SAT (ELA = 410 with or without Essay; math = 430)
- Dual Credit courses (1.0 credit total for ELA and/or math):
  - AP/IB/Cambridge: Earn a C+ (each term) in state-approved course
  - CTE Dual Credit: must earn high school credit; local approval
  - College in the High School or Running Start courses: local approval
- Dual Credit exams (for state-approved courses):
  - AP = 3+
  - Cambridge = E or better
  - IB = 4+
- State assessments:
  - Smarter Balanced: ELA = 2548; math = 2595
  - WA-AIM: ELA = 104; math = 103
- Transition courses (1.0 credit total for ELA and/or math):
  - Bridge to College courses have state-level approval
  - Local articulation agreement between districts and sponsoring colleges



# Land Acknowledgement



Check out:  
<https://native-land.ca/> to find out  
the original stewards  
of the land you  
occupy.



Washington Office of Superintendent of  
**PUBLIC INSTRUCTION**

# Agenda

```
graph TD; A[Agenda] --> B[Graduation Requirement Overview]; B --> C[Credit Requirements]; C --> D[High School and Beyond Plans]; D --> E[Graduation Pathways]; E --> F[Credit-Earning Flexibility, Options, and Waivers]; F --> G[Graduation Support]; G --> H[Resources];
```

Graduation Requirement Overview

Credit Requirements

High School and Beyond Plans

Graduation Pathways

Credit-Earning Flexibility, Options, and Waivers

Graduation Support

Resources





# Graduation Requirement Overview

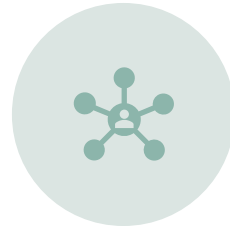
# Graduation Requirements



+



+



=

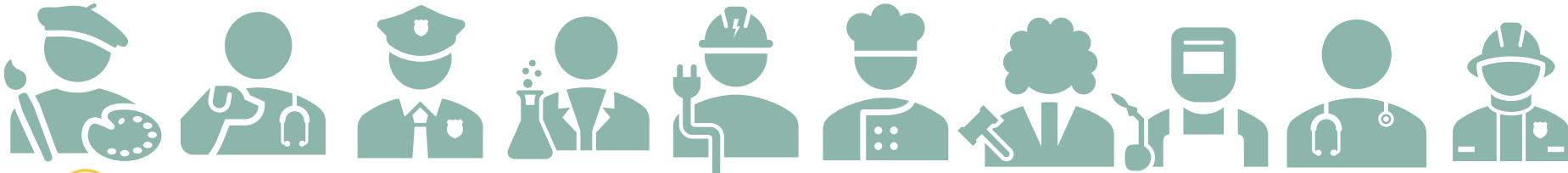


**HIGH SCHOOL  
& BEYOND  
PLANNING**

**HIGH SCHOOL  
INSTRUCTION  
(24-CREDITS)**

**GRADUATION  
PATHWAY**

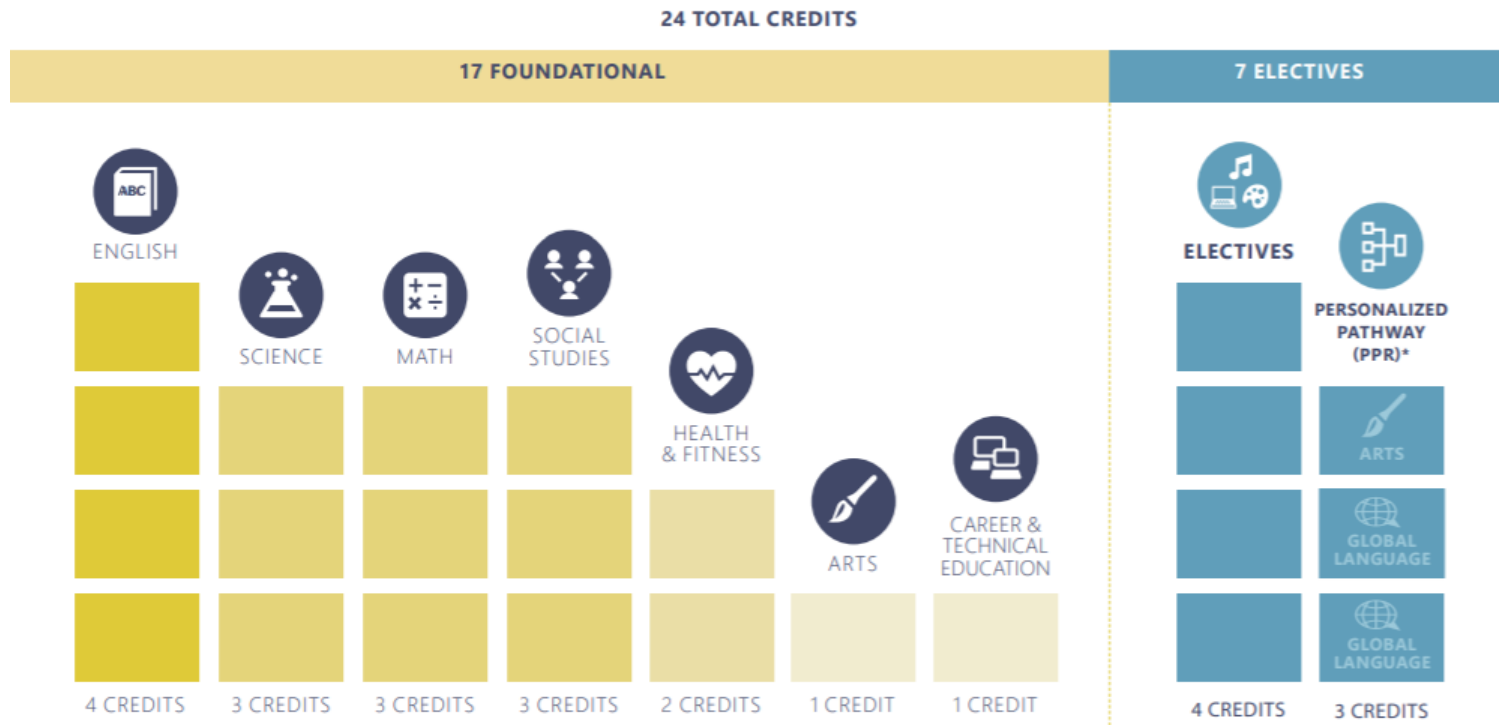
**MEANINGFUL  
DIPLOMA**





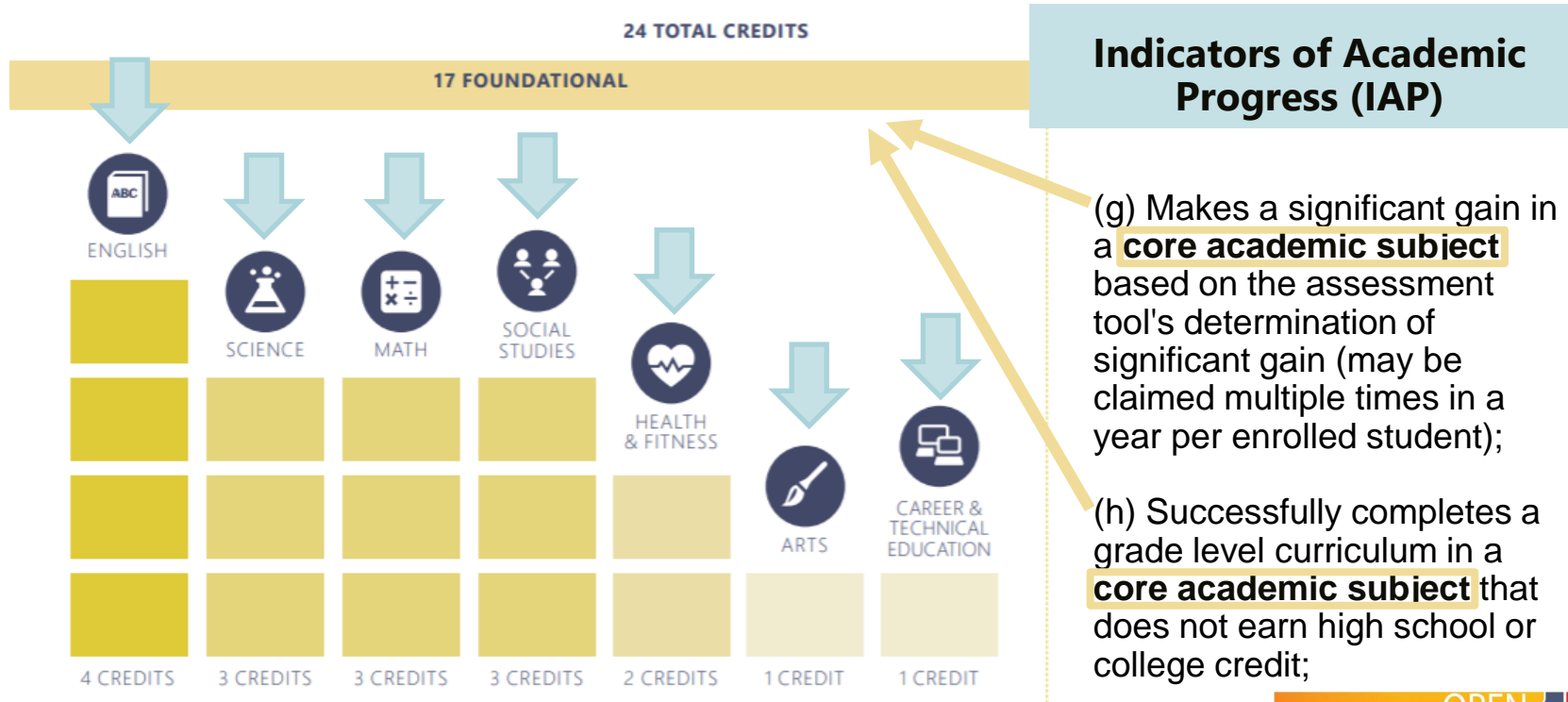
# Credit Requirements

# 24-Credit Subject Area Requirements: Foundational (Core) and Elective (Flexible) Credits



\* Personalized Pathway Requirements (PPR) are electives in any subject that align with the student's interests and their High School and Beyond Plan. The arts and world language credits can be replaced with other electives, based on the student's plan.

# 24-Credit Subject Area Requirements: Foundational (Core) and Elective (Flexible) Credits



\* Personalized Pathway Requirements (PPR) are electives in any subject that align with the student's interests and their High School and Beyond Plan. The arts and world language credits can be replaced with other electives, based on the student's plan.



# High School and Beyond Plans

# Framework for Quality High School and Beyond Planning

## Timeframe

- An annual exploration and planning process
- Begins in **7th or 8th** grade.

## Opportunities

- Explore who they are (skills, interests, goals)
- Discover careers that fit
- Choose classes and activities aligned to goals and interests
- Assess academic progress
- Document achievements
- Adjust goals

## Results

- Students make informed class choices
- Prepares students to pursue a post-high school goal that is meaningful to who they want to be and what they want to do
- Schools are more responsive to students' interests/goals

# HSBP Requirements At-A-Glance



## My High School and Beyond Plan

### WHAT IS A HIGH SCHOOL AND BEYOND PLAN?

Welcome to your High School and Beyond Plan (HSBP)! To be ready for roughly 67% of the jobs in today's world, you need additional education or training after high school. Using the time you are given to work on your HSBP can help you maximize your education and prepare to move forward after high school graduation.

The HSBP graduation requirement focuses on three guiding questions:

- > Who am I?
- > What can I become?, and
- > How do I become that?

Use these three questions as your guide to think about who you are and what you are passionate about, explore possible jobs that align with your interests, skills and dreams, and discover what kind of post-high school education and/or training will best prepare you for a job that fits you!

Your school counselor, advisor and/or teachers, and your family or guardian(s), can help you create and update this plan as your interests and goals change. Use the activities that help build your HSBP to guide your decisions about which are the best available classes to take. Ideally, you'll be able to enroll in a combination of required and elective classes that will provide an opportunity to explore your interests, develop your skills, meet specific credit and course requirements, and prepare for your future goals.

Post high school options to consider as a meaningful *first* next step after high school include on-the-job training (including internships and public service), technical colleges, industry-recognized certificate programs, apprenticeship programs, military training, or two/four-year colleges. There are multiple state and federal financial aid programs and other sources of financial assistance that can help pay for the further education and training you need to complete through one or more of these post-high school options.

### WHAT MUST BE DONE TO COMPLETE THIS GRADUATION REQUIREMENT?

Required elements of your High School and Beyond Plan (sections will be underlined):

- > Identification of your career goals using a career interest inventory.

1

Begins in 7th or 8th grade

Uses career interest assessment to identify career goals

Identification of educational goals for graduation and beyond

Plan for course taking

Information about the College Bound Scholarship and dual credit opportunities

Resumé or activity log to be completed by the end of 12th grade

Intervention and support plan for students not meeting state assessment standards

Must be provided in district's top two non-English languages

Must be updated in 10th grade to inform junior year course-taking



# HSBP Requirements At-A-Glance



## My High School and Beyond Plan

### WHAT IS A HIGH SCHOOL AND BEYOND PLAN?

Welcome to your High School and Beyond Plan (HSBP)! To be ready for roughly 67% of the jobs in today's world, you need post-secondary education or training after high school. Using the time you are given to work on your HSBP, you will explore your education and prepare to move forward after high school graduation.

The HSBP graduation requirement is:

- > Who am I?
- > What can I become?, and
- > How do I become that?

Use these three questions as your guide to think about who you are and what you are passionate about, explore possible jobs that align with your interests, skills and abilities, and discover what kind of post-high school education and/or training will best prepare you for a job that fits you!

Your school counselor, advisor and/or teachers, and your family or guardian(s), can help you create and update this plan as your interests and goals change. Use the activities that help build your HSBP to guide your decisions about which are the best available classes to take. Ideally, you'll be able to enroll in a combination of required and elective classes that will provide an opportunity to explore your interests, develop your skills, meet specific credit and course requirements, and prepare for your future goals.

Post high school options to consider as a meaningful first next step after high school include on-the-job training (including internships and public service), technical colleges, industry-recognized certificate programs, apprenticeship programs, military training, or two/four-year colleges. There are multiple state and federal financial aid programs and other sources of financial assistance that can help pay for the further education and training you need to complete through one or more of these post-high school options.

### WHAT MUST BE DONE TO COMPLETE THIS GRADUATION REQUIREMENT?

Required elements of your High School and Beyond Plan (sections will be underlined):

- > Identification of your career goals using a career interest inventory.

1

## Required

For **Open Doors students** working to earn a diploma

## Timing

Open Doors students may start their HSBP later than is typical

## Awareness

Due to being older and disengagement, **Open Doors students** may not be aware of this plan or may need their plan significantly revised

## Template for HSBP

Go to [High School & Beyond Plan | OSPI \(www.k12.wa.us\)](https://www.k12.wa.us)

# High School & Beyond Plan

## Indicators of Academic Progress (IAP)

(i) Successfully completes college readiness course work with documentation of competency attainment;

(j) Successfully completes job search and job retention course work with documentation of competency attainment;

Begins in 7th or 8th grade

Uses career interest assessment to identify career goals

Identification of educational goals for graduation and beyond

Plan for course taking

Information about the College Bound Scholarship and dual credit opportunities

Resumé or activity log to be completed by the end of 12th grade

Intervention and support plan for students not meeting state assessment standards

Must be provided in district's top two non-English languages

Must be updated in 10th grade to inform junior year course-taking



Pre-made  
lessons

Grades  
6-12

Career  
readiness

College  
readiness

## GRADE 10

#	Lesson Title	Theme
1	Where Am I Going in 10th Grade?	Ownership of Learning
2	Defining College and Career "Prep"	Career and College Development
3	After-Graduation Planning	Career and College Development
4	Defining Me: Leadership	Metacognitive Skills
5	Studying is a Team Sport	Learning Techniques
6	Test Preparation	Learning Techniques
7	Introduction to Program of Study	Career and College Development
8	Mapping Career and College Requirements	Academic Eligibility
9	High School & Beyond Plan	High School and Beyond Plan
10	Course Registration	Academic Eligibility
11	Work Samples and Reflection	Ownership of Learning
12	Academic Progress Review	High School and Beyond Plan
13	Understanding Self-doubt	Ownership of Learning
14	Planning for Summer	Academic Eligibility
15	Defining Credentials	Career and College Development
16	Why Go to College?	Career and College Development
17	Leveraging Strengths and Removing Barriers	Ownership of Learning
18	Paying for College: TheWashBoard.org	Transition Skills
19	Preparing for Student-Led Conferences I	Ownership of Learning
20	Preparing for Student-Led Conferences II	Ownership of Learning
21	Fulfilling Requirements in 10th Grade	Academic Eligibility
22	Building a Strong Transcript in 10th Grade	Academic Eligibility
23	Conducting the College Search in 10th Grade	Transition Skills
24	Learning to Use Money in 10th Grade	Financial Literacy
25	Purchasing	Financial Literacy
26	Savings and Banking	Financial Literacy
27	Dropping Out or Staying In	Transition Skills
28	Recreation, Leisure and Volunteerism	Transition Skills
29	My Story	Transition Skills
30	Lessons on Leadership from a Dancing Guy	Transition Skills



### Indicators of Academic Progress (IAP)

(i) Successfully completes college readiness course work with documentation of competency attainment;

(j) Successfully completes job search and job retention course work with documentation of competency attainment;

### GRADE 10

#	Lesson Title	Theme
1	Where Am I Going in 10th Grade?	Ownership of Learning
2	Defining College and Career "Prep"	Career and College Development
3	After-Graduation Planning	Career and College Development
4	Defining Me: Leadership	Metacognitive Skills
5	Studying is a Team Sport	Learning Techniques
6	Test Preparation	Learning Techniques
7	Introduction to Program of Study	Career and College Development
8	Mapping Career and College Requirements	Academic Eligibility
9		
10	<p><b>Not just for diploma earners!</b>  <i>Career Guidance WA</i> curriculum has IAP potential for <b>all Open Doors students</b> as readiness course work!</p>	
11		
12		
13		
14		
15		
16		
17		
18		
19		
20		
21	Fulfilling Requirements in 10th Grade	Academic Eligibility
22	Building a Strong Transcript in 10th Grade	Academic Eligibility
23	Conducting the College Search in 10th Grade	Transition Skills
24	Learning to Use Money in 10th Grade	Financial Literacy
25	Purchasing	Financial Literacy
26	Savings and Banking	Financial Literacy
27	Dropping Out or Staying In	Transition Skills
28	Recreation, Leisure and Volunteerism	Transition Skills
29	My Story	
30	Lessons on Leadership from a Dancing Guy	



# Graduation Pathways

# Graduation Pathways are NOT:

“Alternatives” to the high school assessment

Ways to track students

New “boxes to check” for graduation

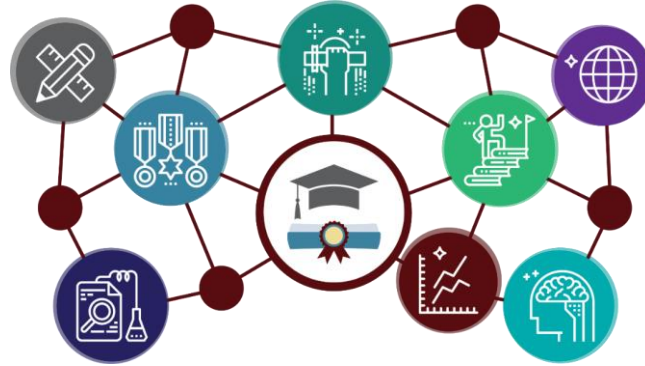
# Graduation Pathways are:

Aligned with the student’s HSBP

Built with the year after high school in mind

Equal in value and expectations

# Graduation Pathway Options



College or University Pathway	Military Pathway	Career Pathway
2- Year College Technical or Specialty College	Serve in the Armed Forces  *ROTC and military academies require 4-year college admissions	Career Training
4-Year College/University		Apprenticeship
		Direct-to-Work or Internship

# CLASS OF 2022 GRADUATION PATHWAYS

## A Quick Reference Guide

### Career/Technical Field = CTE Sequence

- Complete a sequence of 2.0 or more CTE credits that either includes a dual credit course or leads to an industry recognized credential
- Complete a Core Plus program

### Military Career Interest – ASVAB Exam (AFQT Section only)

- Score for Class of 2022 = 31
- Check the [State Board of Education website](http://www.sbe.wa.gov/our-work/graduation-pathway-options/asvab) by September 1 annually for score update ([www.sbe.wa.gov/our-work/graduation-pathway-options/asvab](http://www.sbe.wa.gov/our-work/graduation-pathway-options/asvab))

### Postsecondary Education = English Language Arts (ELA) and Math Courses and Exams (student must complete both an ELA and math option)

Students may use any combination of the ELA and math options listed in this section:

- ACT (ELA = 14 with Writing; math = 16)
- SAT (ELA = 410 with or without Essay; math = 430)
- Dual Credit courses (1.0 credit total for ELA and/or math):
  - AP/IB/Cambridge: Earn a C+ (each term) in state-approved course
  - CTE Dual Credit: must earn high school credit; local approval
  - College in the High School or Running Start courses: local approval
- Dual Credit exams (for state-approved courses):
  - AP = 3+
  - Cambridge = E or better
  - IB = 4+
- State assessments:
  - Smarter Balanced: ELA = 2548; math = 2595
  - WA-AIM: ELA = 104; math = 103
- Transition courses (1.0 credit total for ELA and/or math):
  - Bridge to College courses have state-level approval
  - Local articulation agreement between districts and sponsoring colleges

## Indicator of Academic Progress (IAP)

- (e) Passes one or more tests or benchmarks that would satisfy the state board of education's graduation requirements as provided in chapter [180-51](#) WAC;

### *Be sure it is actual CTE or Dual Credit*

Prior to indicating IAP (e), thoroughly review the materials, providers, curriculum, and/or online course.

Investigate the difference between career and occupational education vs “CTE”. Determine if it is a potential college credit generating course vs “Dual Credit”. Terms can be misleading.





# Credit-Earning Flexibility and Options

# Flexibility for Credit Recovery and Completion

## Dual Credit

- Running Start
- College in the High School
- CTE Dual Credit
- Advanced Placement
- Cambridge International
- International Baccalaureate
- Open Doors (100 level and higher)

## Mastery Based Credits

- [Mastery-based Learning FAQs](#)

## Additional Time

- Up to age 20 for general education students
- Up to age 21 for students receiving special education services
- Open Doors under age 21 on Sept 1



# Credit Waivers

# Graduation Requirements Emergency Waiver (GREW)

Permits the waiver of **credits** and **graduation pathway requirements**, as a **last resort** for helping students who graduate with the class of 2023

## **Good faith effort:**

- Individual student advising
- Academic supports
- Mastery-based crediting
- More examples in **WAC**  
**180-111-020**

# What Can Be Waived with the GREW for the class of 2023 ?

- **Up to 2 credits\*\***

- May be 'flexible' credits or 'core' credits
- No more than 1.0 credit in any 'core' subject area

- **Graduation pathway options**

Students must earn at least a **total of 20 credits**

\*\*Before use of this waiver, LEAs should consider using their **existing authority** to waive local graduation requirements, the 2-credit waiver of flexible credits for individual student circumstances, and flexibility in the PE and Washington State History requirements

# Student Eligibility for the Waiver

- Reasonably expected to graduate during the 2022-2023 school year [**WAC 180-111-020(5)**]
- Demonstrated postsecondary preparation for their next steps as identified in their High School and Beyond Plan
- Experienced a significant disruption to their ability to complete graduation requirements due to the emergency

## Demonstration of Postsecondary Preparation:

- Complete a graduation pathway option
- Earn college credit
- CTE preparatory course
- More examples in **WAC 180-111-020**

**Can students who want to graduate early use the GREW?** Students who want to graduate early must meet all credit and subject area requirements for their cohort. The GREW may be applied only to the graduation pathway requirement.



# Graduation Requirement Emergency Waiver

**2022 OFFICE HOURS**

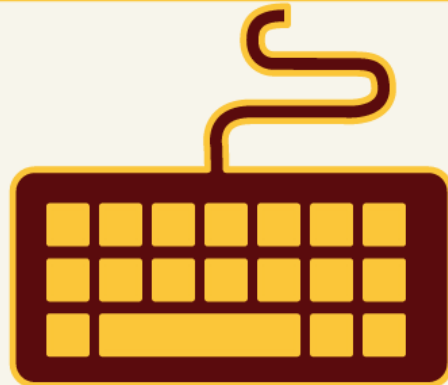
Join the State Board of Education and OSPI to learn about 2022  
GREW updates

Register at this link: <https://bit.ly/2022GREW>

Tuesday, May 17 | 11:00am-12:00pm

Wednesday, May 25 | 11:30-12:30pm

Tuesday, May 31st | 1:00pm-2:00pm



The Washington State  
BOARD OF EDUCATION



Washington Office of Superintendent of  
PUBLIC INSTRUCTION

# Other Waivers

## Waiver of Local Graduation Requirements

- District has authority to waive requirements that are above and beyond the WA State graduation requirements

## Flexible Credit Waiver

- School districts can waive up to two flexible credits for individual students
- Credits waived based on individual student circumstances
- None of the waived credits can be mandatory core credits.

## PE Waiver

- Students may be excused from the physical education requirement
- Students are still required to demonstrate mastery in the knowledge portion of the physical education requirement, in accordance with written district policy.

## WA State History Waiver

- Can be waived by principals for students who:

Have successfully completed a state history course of study in another state; **OR**

Are in eleventh or twelfth grade and who have not completed a course of study in Washington's history because of previous residence outside the state; **OR**

Have not completed WA State History because of emergency school closure, or other circumstance due to an emergency that prevented completion





# Resources

# Graduation Requirement Resources

Resource Description	Resource Link
OSPI's Graduation page provides resources and information related to WA State Graduation Requirements	<a href="#">OSPI Graduation Webpage</a>
This resource provides students and families with a high-level summary of Washington State's high school graduation requirements, as set forth by the state legislature and put into rule by the <a href="#">State Board of Education</a> (SBE).	<a href="#">Graduation Requirements: Class of 2022 (one-pager)</a>
The Class of 2022 Graduation Pathways Toolkit includes comprehensive guidance about Washington's graduation requirements and available resources.	<a href="#">Class of 2022 Graduation Pathways Toolkit</a>
SBE website detailing Washington State Graduation Requirements.	<a href="#">State Board of Education (SBE) Graduation Requirements Webpage</a>
A helpful infographic from SBE providing a quick-look at WA State Graduation Requirements.	<a href="#">SBE Graduation Infographic</a>
ReadyWA provides resources that help students and families understand their educational journey, where their career pathway can take them, and the skills and knowledge they need to reach their goals.	<a href="#">ReadyWA</a>

# Graduation Pathways Resources

Resource Description	Resource Link
<p>This resource details the available options for students to complete the Graduation Pathway graduation requirement.</p>	<p><a href="#">Graduation Pathways One-Pager</a></p>
<p>Part of the <a href="#">OSPI-WSAC Graduation Webinar Series</a>, this webinar explored options for building new, or expanding on, existing Graduation Pathways; promising strategies and resources for career/college preparation; and provided resources &amp; support around graduation pathways.</p>	<p><a href="#">Graduation Pathways: Building Pathways to Careers and College That Serve All Students (PDF)</a></p>
<p>Part of the <a href="#">OSPI-WSAC Graduation Webinar Series</a>, this webinar reviewed <a href="#">HB1599</a> (Multiple Pathways to Graduation); provided an overview of graduation pathways; explored graduation requirement changes; detailed implementation steps for graduation requirements and pathways; and provided resources &amp; support around graduation pathways and requirements.</p>	<p><a href="#">OSPI-WSAC Graduation Pathways 2020 webinar</a></p>

# High School and Beyond Plan Resources

Resource Description	Resource Link
<p>Part of the <a href="#">OSPI-WSAC Graduation Webinar Series</a>, this webinar explored current practices and resources around HSBP implementation and engagement; Individualized Education Program (IEP) alignment; and provided resources to support HSBP Implementation.</p>	<p><a href="#">High School and Beyond Planning: Strategies to Increase Student, Staff, Family, and Community Engagement</a></p>
<p>This State Board of Education (SBE) resource details the requirements of a High School and Beyond Plan and provides HSBP implementation resources.</p>	<p><a href="#">High School &amp; Beyond Plan Guidance</a></p>
<p>This OSPI document answers frequently asked questions around the HSBP.</p>	<p><a href="#">High School &amp; Beyond Plan FAQ</a></p>
<p>The HSBP and the IEP both support a student's smooth transition from school to adult life. IEPs should be developed to align with HSBPs developed by students, so that a comprehensive plan is in place that addresses the student's needs and meets all federal, state, and local requirements.</p>	<p><a href="#">Guidelines for Aligning High School and Beyond Plans and IEP Transition Plans</a></p>

# Graduation Requirement Emergency Waiver (GREW) Resources

Resource Description	Resource Link
SBE's Emergency Waiver Program website provides details of the GREW, frequently asked questions, and resources pertaining to the waiver.	<a href="#">SBE Emergency Waiver Webpage</a>
This State Board of Education (SBE) resource answers frequently asked questions pertaining to the GREW.	<a href="#">SBE Emergency Waiver FAQs</a>
This State Board of Education (SBE) resource provides details and requirements for issuing the GREW Waiver	<a href="#">Waiver Quick Info (one-pager)</a>
In the Graduation Requirement Emergency Waiver presentation, OSPI and SBE staff cover a variety of graduation requirement flexibility options for the Class of 2022, including the continued availability of a GREW	<a href="#">OSPI Graduation Requirement Emergency Waiver presentation(webinar)</a>

# Contacts

<b>Contact</b>	<b>Title</b>	<b>Specialty</b>
Mandy Paradise	Program Supervisor, Student Reengagement	Open Doors Youth Reengagement
Liz Quayle	Mastery-based & Alternative Learning Accountability Manager	Open Doors Youth Reengagement & competency-based credits
Brittni Thompson	Program Supervisor, Secondary School Counseling	Graduation and Secondary School Counseling Support
Alexandra Toney	Program Supervisor, Special Services	Graduation Supports specific to Special Services Delivery

# Questions?





Washington Office of Superintendent of  
**PUBLIC INSTRUCTION**

*Connect with us!*



[k12.wa.us](https://k12.wa.us)



[facebook.com/waospi](https://facebook.com/waospi)



[twitter.com/waospi](https://twitter.com/waospi)



[youtube.com/waospi](https://youtube.com/waospi)



[medium.com/waospi](https://medium.com/waospi)



[linkedin.com/company/waospi](https://linkedin.com/company/waospi)