

Washington State Fellows Network

Engaging Teacher Leaders in English Language Arts, Mathematics, Science, and Early Learning

Mission

The Fellows are a network of Washington State educational leaders who in their capacity and the capacity of others improve student learning.

Vision

The impact of the Fellows will improve student learning through professional learning, collaboration, leadership development, student-centered, and community-centered pedagogies, in partnership with districts and ESD's. It will also result in more accessible, culturally relevant and personally meaningful learning opportunities for students across Washington.

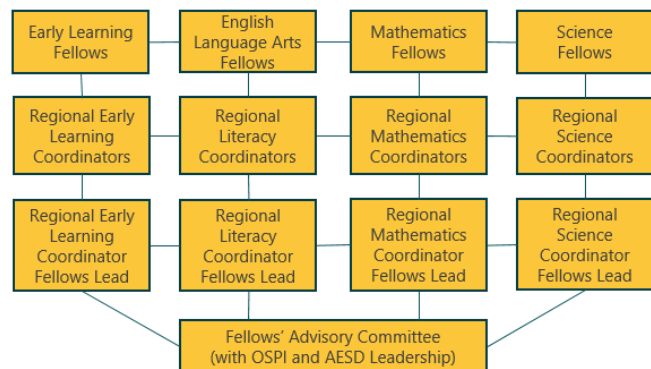
What is the Washington State Fellows Network?

The Fellows Network is a group of over 300 instructional leaders convened by the Office of Superintendent of Public Instruction (OSPI) and the Association of Educational Service Districts (AESD) to support district and community implementation of state learning standards in mathematics, English Language Arts (ELA), and science; and of the Early Learning Guidelines.

Regional ESD coordinators, in collaboration with OSPI content-area leadership, convene the Fellows four times per year to engage in shared learning. New Fellows participate in an orientation meeting prior to the four convenings. Common to all four areas is a commitment to build content learning and instructional leadership, with a focus on equity.

While Fellows do not need to commit to every year of this three-year program, those who do will experience deeper and expanded learning in the topics of leadership, adult learning, change management, content area knowledge, equity, use of data and analytics, and student growth.

HOW IS THE FELLOWS NETWORK STRUCTURED?

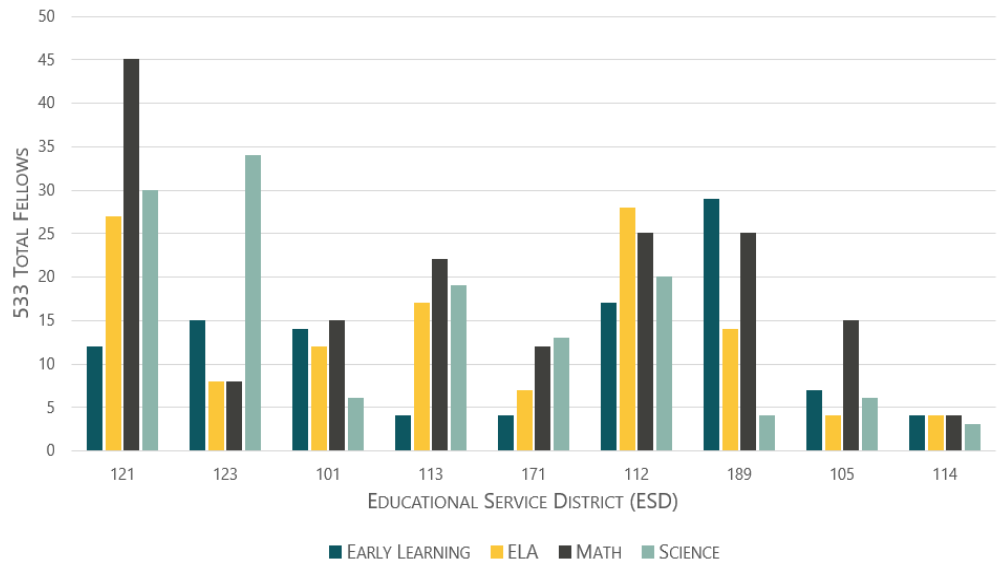


How are the Fellows distributed regionally across the state?

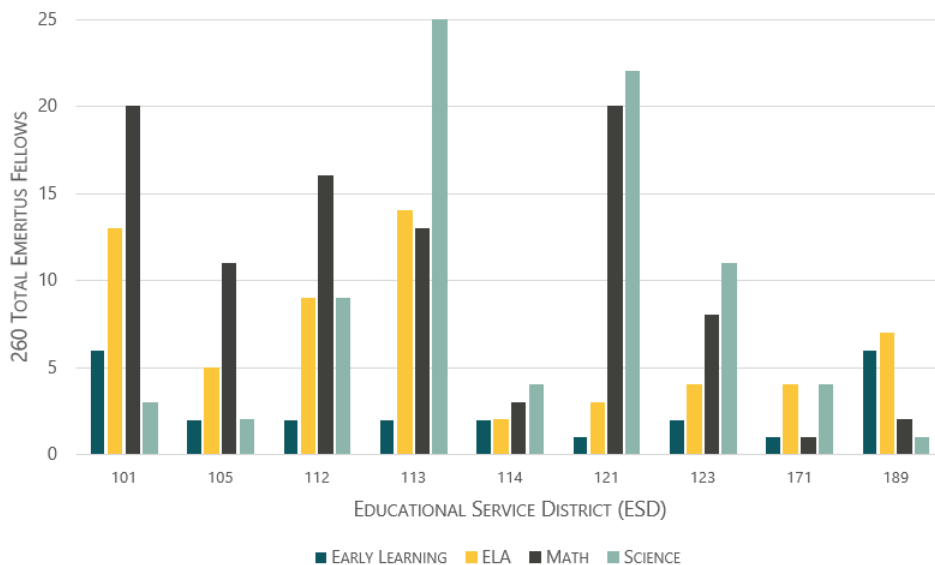
New and Returning Fellows

- The Fellows Network is distributed across four content areas in all nine ESD regions of the state.
- 383 Fellows in the four content areas participated in 2022–23.
- Participation numbers declined from the year prior. This can be attributed to lack of resources and time in response to the global pandemic.

WHERE WERE THE 2020–21 NEW AND RETURNING FELLOWS?
FELLOWS BY ESD (DISTRIBUTED BY CONTENT AREA)



WHERE WERE THE 2020–21 EMERITUS FELLOWS?
EMERITUS FELLOWS BY ESD (DISTRIBUTED BY CONTENT AREA)



Emeritus Fellows

- Fellows who wish to remain connected to the Network beyond three years may become Emeritus Fellows.
- Emeriti complete an annual interest survey to let regional coordinators know that they are available.
- Emeritus Fellows will continue their leadership with local, regional, and/or state initiatives.
- 260 Emeritus Fellows in the four content areas participated in 2020–21.

Becoming a Fellow

How does someone become a Fellow?

Fellows complete an application (including assurances). ESD regional coordinators lead the selection process. Application cycles open annually in April. ESDs will notify applicants in late summer. See the [OSPI website](#) for more information.

What are the commitments of a Fellow?

- Fulfill the obligations outlined in the Fellows Assurances.
- Collaborate throughout the year with district, building, program, or agency administrators to discuss, create and document the ongoing Fellow's Action Plan and Reflection Tool. The plan outlines how the Fellow's leadership will support the school and/or community's learning standards (math, ELA, science) or early learning implementation.
- Implement learning from the Fellows meetings within their own instructional practice and support other teachers' initiative/outcome goals in Washington State Learning Standards in math, ELA, science; or Early Learning Guidelines.
- Submit completed Fellow's Plan to the ESD Regional Coordinator/Advisor at the end of the school year.
- **English Language Arts, Mathematics, Science, and Early Learning:** Attend and participate in a minimum of four one-day regional Fellows convenings. New Fellows attend an additional orientation meeting. Convenings may take place in-person, remote, or hybrid.

What are the administrative commitments of the school, district, and/or community organization?

- With the Fellow, collaboratively review, agree to, and sign the Assurances.
- In the fall, collaborate with the Fellow to complete the Fellow's Action Plan and Reflection Tool.
- Meet with the Fellow after each Fellows convening to revisit and update the Fellow's action plan.
- Support travel and substitute costs associated with all Fellows professional learning convenings.

How do districts/organizations benefit from supporting a Fellow?

- Gain in-house expertise.
- Expand opportunities to build teacher leaders.
- Access current approaches and strategies to content learning.

For Statewide Fellows questions related to each content area, please contact:

ELA

Cheryl Vance
ELA Regional
Administrator
ESD 113
cvance@esd113.org
360-464-6706

Math

Molly Daley
Math Coordinator
ESD 112
molly.daley@esd112.org
360-952-3373

Science

Scott Killough
Regional Science
Administrator
ESD 113
skillough@esd113.org
360-464-6703

Early Learning

Kim Crummey
P-3 Professional Program
Manager
OESD 114
kcrummey@oesd114.org
360-478-6862